



INSTALLATION INSTRUCTIONS

**Indoor Hearth Oven
ZEP30FR**

ENGLISH/FRANÇAIS.

Safety Information

Have a question or need assistance with your appliance? Try the Monogram website 24 hours a day, any day of the year! You can also shop for more great Monogram products and take advantage of all our on-line support services designed for your convenience. In the US: monogram.com or call 800.444.1845.

FOR YOUR SAFETY

- Be sure your oven is installed properly by a qualified installer or service technician.
- Be sure the oven is securely installed in a cabinet that is firmly attached to the house structure. Never allow anyone to climb, sit, stand or hang on the oven.
- Make sure the cabinets and wall coverings around the oven can withstand the temperatures (up to 200°F [93.3°C]) generated by the oven.

⚠ WARNING The electrical power to the oven supply line must be shut off while line connections are being made. Failure to do so could result in serious injury or death.

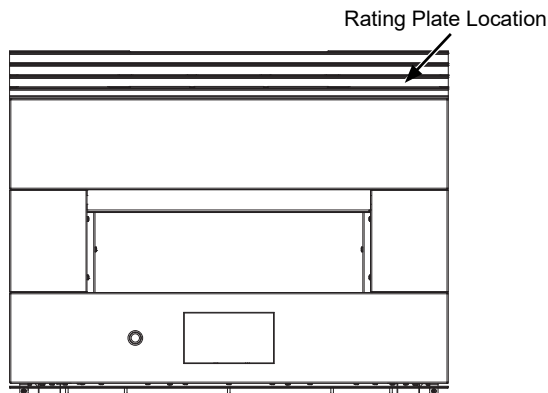
ELECTRICAL REQUIREMENTS

This appliance must be supplied with the proper voltage and frequency, and connected to an individual, properly grounded branch circuit, protected by a circuit breaker or fuse. See the rating plate located on the bottom of the front panel to determine the rating of the product. The chart below shows the minimum recommended dedicated circuit protection.

| KW Rating 240V | KW Rating 208V | Required Circuit Size (Dedicated) |
|----------------|----------------|-----------------------------------|
| 9.7 KW–12.0 KW | 8.4 KW–10.4 KW | 50 Amp |

ELECTRICAL REQUIREMENTS

Rating plate is located on the top right of the front panel.



We recommend you have the electrical wiring and hookup of your oven connected by a qualified electrician. After installation, have the electrician show you how to disconnect power from the range.

Check with your local utilities for electrical codes which apply in your area. Failure to wire your oven according to governing codes could result in a hazardous condition. If there are no local codes, your oven must be wired and fused to meet the requirements of the National Electrical Code, NFPA No. 70—Latest Edition, available from the National Fire Protection Association.

Effective January 1, 1996, the National Electrical Code requires that new, but not existing, construction utilize a four-conductor connection to an electric oven. When installing an electric oven in new construction, a mobile home, recreational vehicle or an area where local codes prohibit grounding through the neutral conductor, follow the instructions in the section on NEW CONSTRUCTION AND FOUR-CONDUCTOR BRANCH CIRCUIT CONNECTION.

You must use a single-phase 120/208 VAC or 120/240 VAC, 60 hertz electrical system. If you connect to aluminum wiring, properly installed connectors approved for use with aluminum wiring must be used.

READ AND SAVE THESE INSTRUCTIONS

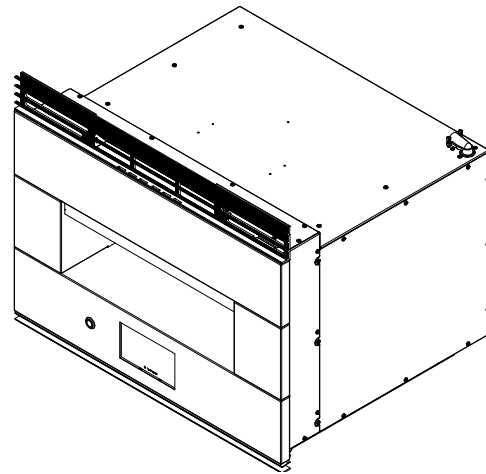
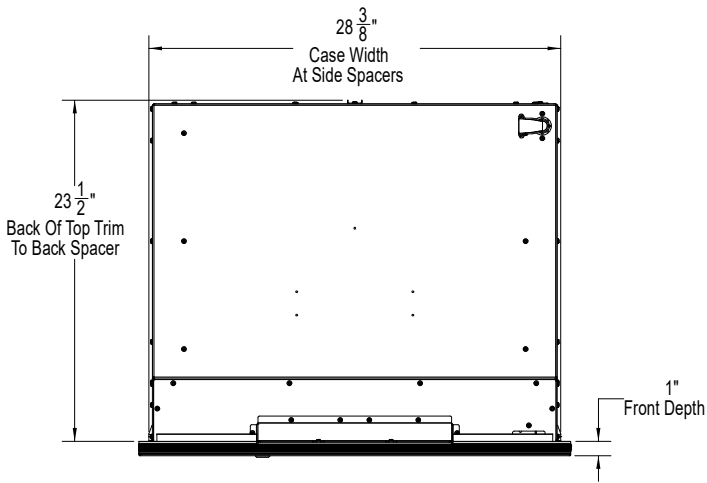
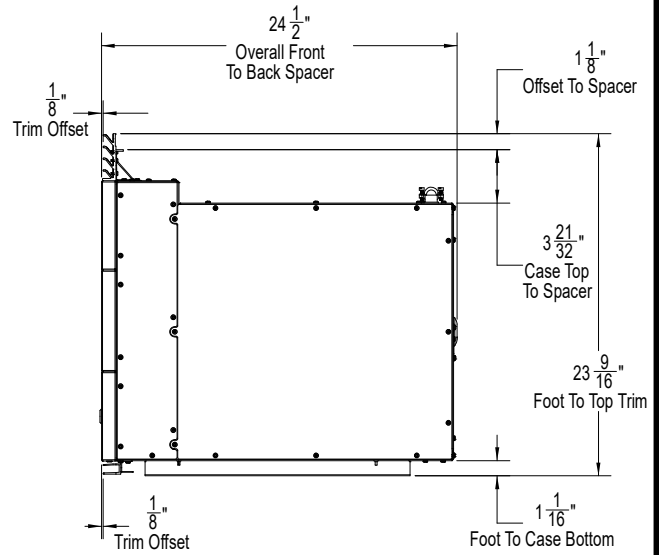
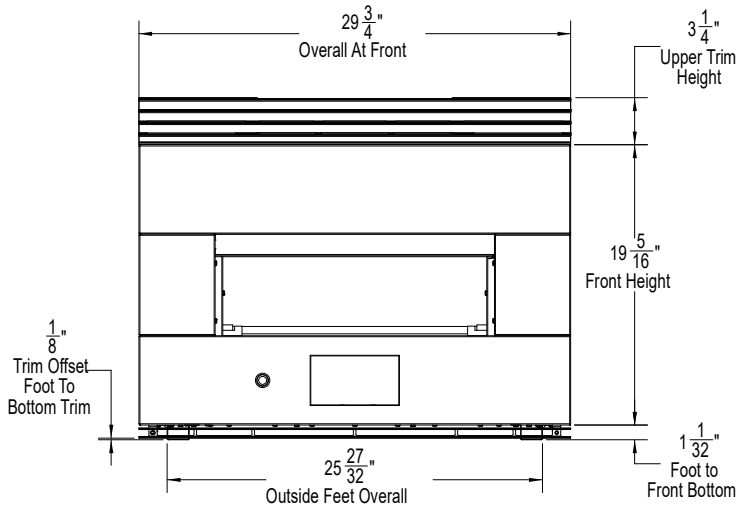
Contents

CONTENTS

| | | | |
|--|----|---|----|
| Safety Information | 2 | 1J: Hearth Oven Over Steam Oven – Flush-Inset Installation With A Minimum Gap Between..... | 16 |
| Design Information | | 1K: Hearth Oven Over Steam Oven –Standard Installation With A 2” Platform Between..... | 17 |
| Product Dimensions (With Trim) | 4 | 1L: Hearth Oven Over Steam Oven – Flush-Inset Installation With A 2” Platform Between | 18 |
| Pre-Installation Checklist..... | 5 | 1M: Hearth Oven Over Warming Drawer –Standard Installation With A Minimum Gap Between..... | 19 |
| Installation Information | | 1N: Hearth Oven Over Warming Drawer – Flush-Inset Installation With A Minimum Gap Between | 20 |
| Parts Included | 6 | 1O: Hearth Oven Over Warming Drawer –Standard Installation With A 2” Platform Between..... | 21 |
| Materials Needed (not provided)..... | 6 | 1P: Hearth Oven Over Warming Drawer – Flush-Inset Installation With A 2” Platform Between | 22 |
| Tools Needed | 6 | 1Q: Hearth Oven Platform For Minimum Gap Between Appliances: Dado & Mechanical Fastener Concept | 23 |
| Installation | | 1R: Hearth Oven Platform For Minimum Gap Between Appliances: Tenon & Mechanical Fastener Concept | 24 |
| 1A: Cutout for Hearth Oven - Standard Installation | 7 | 1S: Side-By-Side Combo Installation | 25 |
| 1B: Hearth Oven - Flush Inset Installation..... | 8 | 2. Electrical Connections..... | 26 |
| 1C: Hearth Oven Over Wall Oven –Standard Installation With A Minimum Gap Between | 9 | 3. Installing the Oven in the Cabinet..... | 28 |
| 1D: Hearth Oven Over Wall Oven – Flush-Inset Installation With A Minimum Gap Between | 10 | PRE-TEST CHECKLIST | 29 |
| 1E: Hearth Oven Over Wall Oven –Standard Installation With A 2” Platform Between | 11 | OPERATION CHECKLIST | 29 |
| 1F: Hearth Oven Over Wall Oven – Flush Inset Installation With A 2” Platform Between | 12 | | |
| 1G: Hearth Oven Over French Door Wall Oven – Standard Installation With A Minimum Gap Between | 13 | | |
| 1H: Hearth Oven Over French Door Wall Oven – Standard Installation With A 2” Platform Between..... | 14 | | |
| 1I: Hearth Oven Over Steam Oven –Standard Installation With A Minimum Gap Between..... | 15 | | |

Design Information

PRODUCT DIMENSIONS (WITH TRIM)

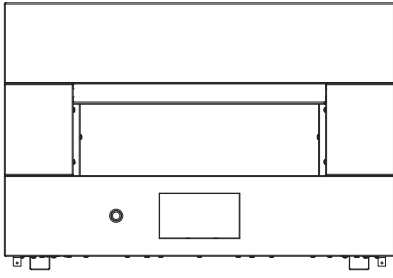


Design Information

PRE-INSTALLATION CHECKLIST

ALL INSTALLATION INFORMATION ON THE FOLLOWING PAGES IS TO BE USED FOR ELECTRIC INDOOR HEARTH OVEN INSTALLATION!

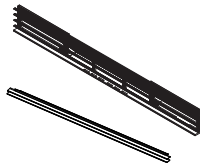
- Remove packaging materials and literature pack.



Hearth Oven



Literature Pack



Included Trim

- Remove Installation Instructions from literature pack and read them carefully before you begin.
Be sure to place all literature, Owner's Manual, Installations, etc. in a safe place for future reference.
- Place the oven on a table or platform even with the cutout opening. Platform must support 200 lbs. (91 Kg).

The Hearth Oven may be installed in a cabinet alone, above or next to approved models. See label on top of the oven for approved models or go to geappliances.com/combinations.

⚠ CAUTION Installing the oven below the minimum height of 45 inches creates a burn hazard for children. Do not install below the minimum height.

Installation Information

BEFORE YOU BEGIN

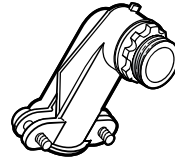
Read these instructions carefully and completely.

- **IMPORTANT** — Save these instructions for local inspector's use.
- **IMPORTANT** — Observe all governing codes and ordinances.
- **Note to Installer** – Be sure to leave these instructions with the consumer.
- **Note to Consumer** – Keep these instructions for future reference.
- Proper installation is the responsibility of the installer and product failure due to improper installation is NOT covered under warranty.
- **Note** – This appliance must be properly grounded.

ATTENTION INSTALLER

All electric wall ovens must be hard wired (direct wired) into an approved junction box. A plug and receptacle is NOT permitted on these products.

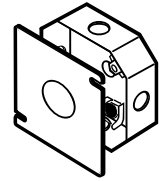
MATERIALS NEEDED



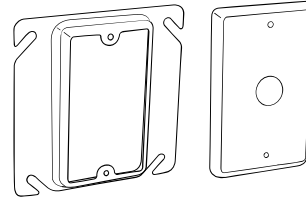
Option 1



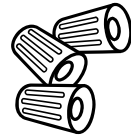
Option 2



Junction Box
(1 1/2 Depth Max.)



Plaster Ring and Cover
(Option 1)



Wire Nuts

PARTS INCLUDED

(Appearance will vary)



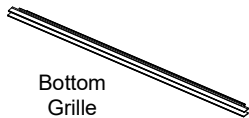
Top Grille
Assembly



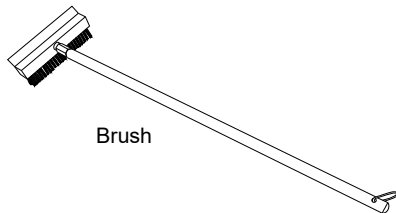
Upper &
Lower Grille
1/2" T20 Torx
(8)



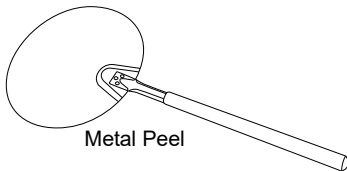
3/4" Phillips
Screws (2)



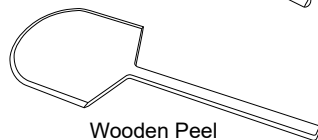
Bottom
Grille



Brush



Metal Peel



Wooden Peel

TOOLS NEEDED



Wire Strippers



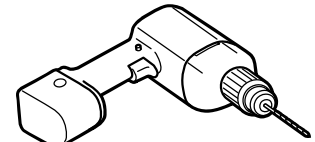
Phillips #2
Screwdriver



Flathead
Screwdriver



T20 Torx
Screwdriver

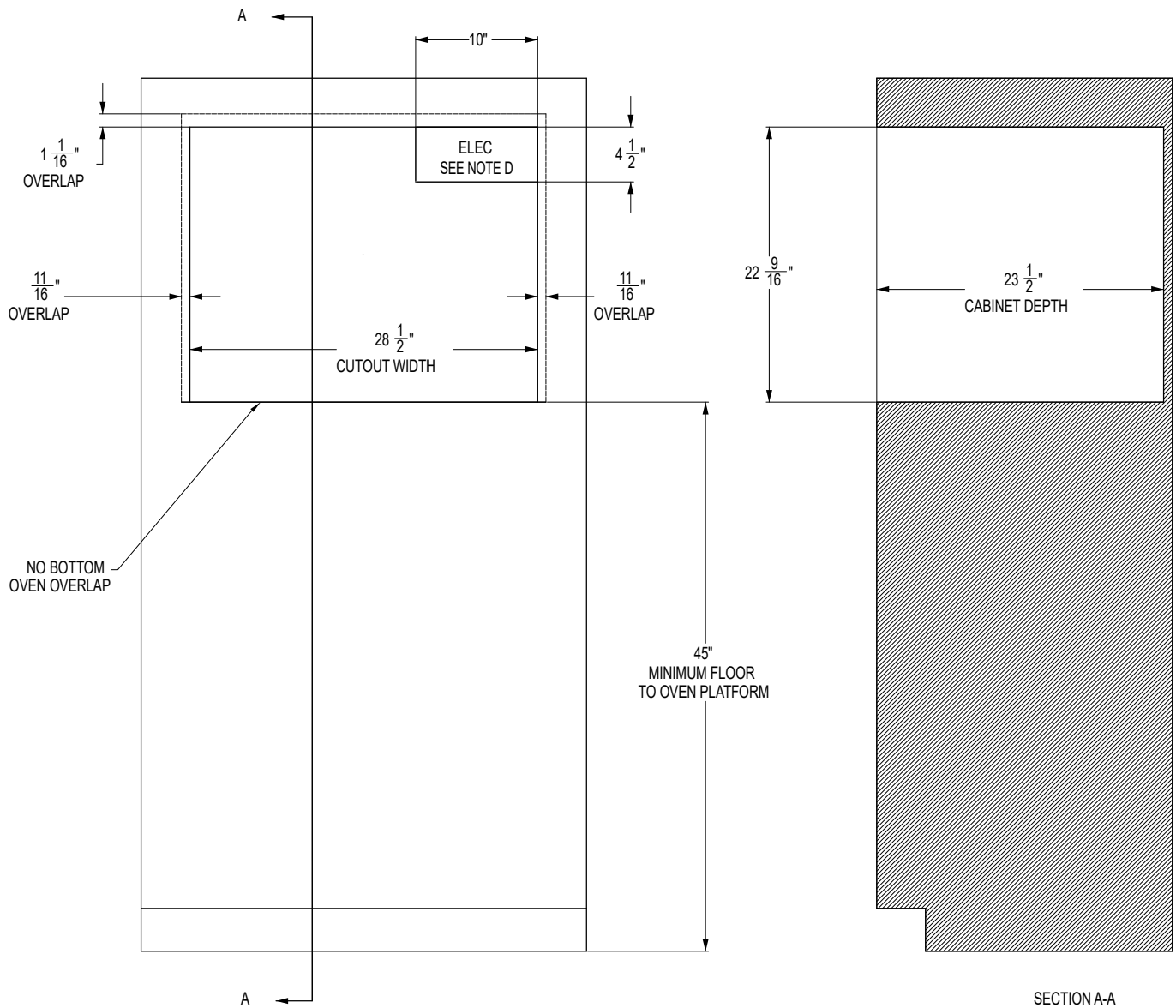


Drill and 3/32" drill bit

Installations

1 A HEARTH OVEN - STANDARD INSTALLATION

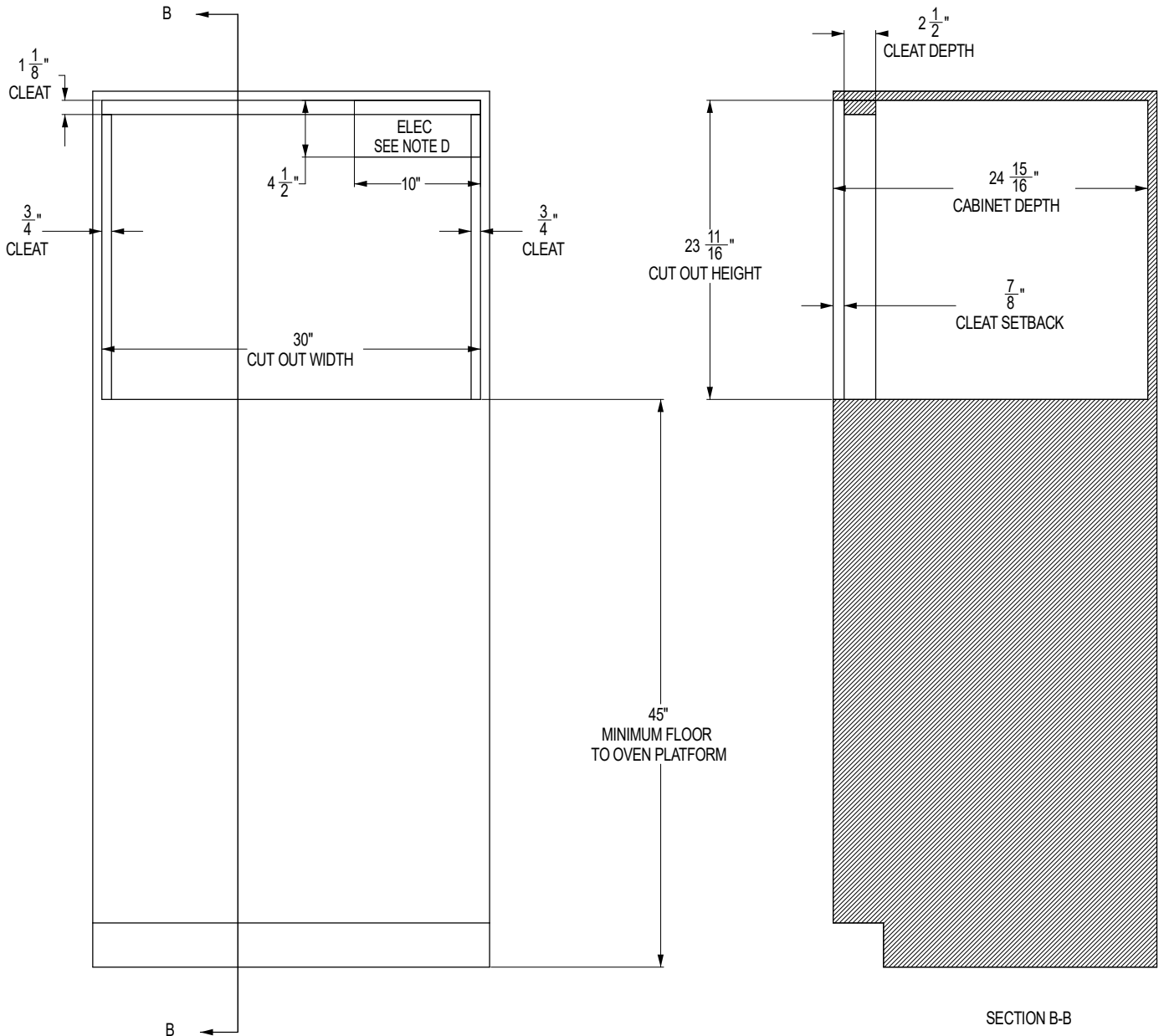
- A** 45" is the required minimum installation height. Oven may be installed higher based on owner preference.
- B** Platform must be able to support 200 lbs (91 kg).
- C** Solid enclosure required on the top, bottom, left side, right side and back. The back surface may be drywall. Advanced fabrication and assembly techniques are strongly encouraged to ensure precise cabinet squareness and parallelism.
- D** Junction box location: Must be flush with back surface so as not to extend into the 23-1/2" cabinet depth. Junction box may also be located in an adjacent cabinet.
- E** A flush appearance may be achieved relative to surrounding cabinet door and drawer fronts. A minimum 1/8" reveal BEYOND the OVERLAP dimensions is recommended.



Installations

1 B HEARTH OVEN - FLUSH INSET INSTALLATION

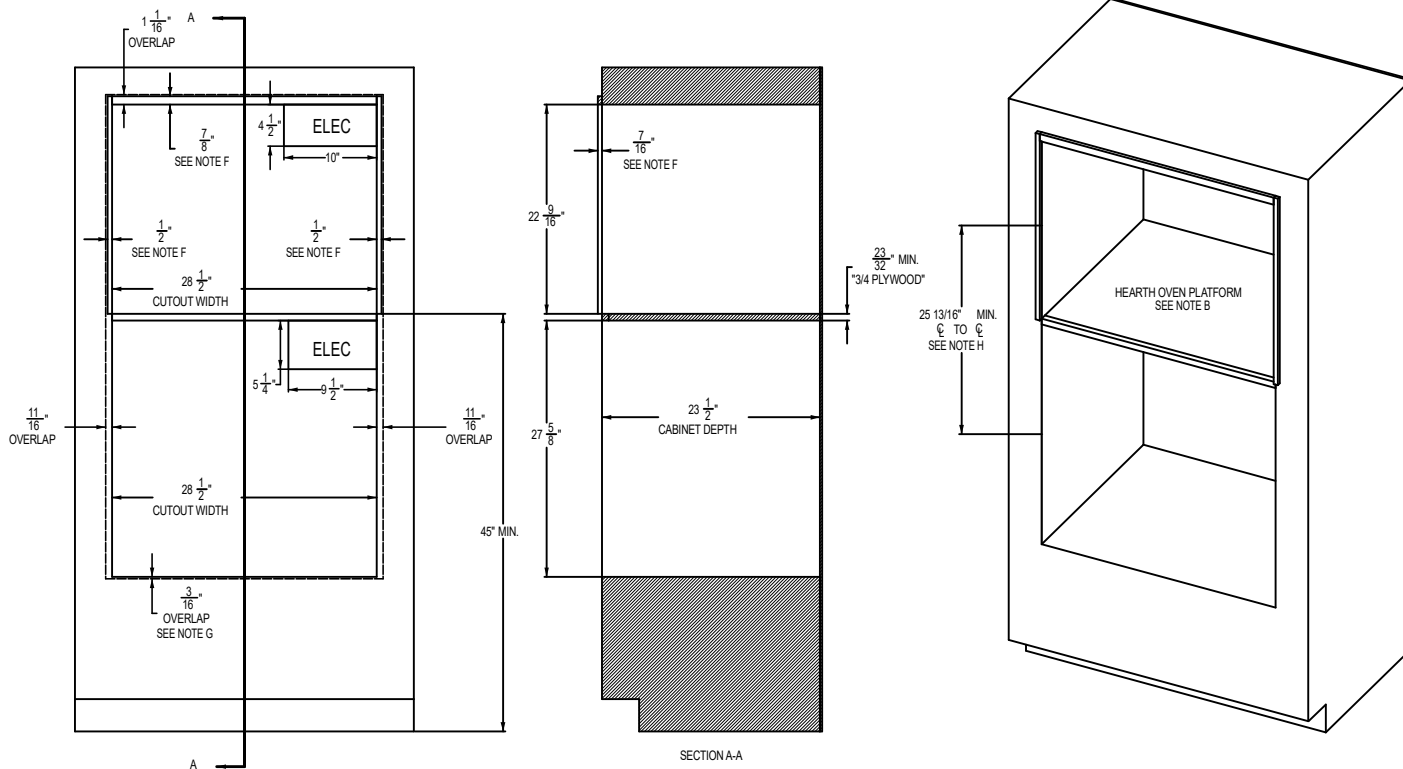
- A** 45" is the required minimum installation height. Oven may be installed higher based on owner preference.
- B** Platform must be able to support 200 lbs (91 kg).
- C** Solid enclosure required on the top, bottom, left side, right side and back. The back surface may be drywall. Advanced fabrication and assembly techniques are strongly encouraged to ensure precise cabinet squareness and parallelism.
- D** Junction box location: Must be flush with back surface so as not to extend into the 24-15/16" cabinet depth. Junction box may also be located in an adjacent cabinet.



Installations

1 C HEARTH OVEN OVER WALL OVEN –STANDARD INSTALLATION WITH A MINIMUM GAP BETWEEN

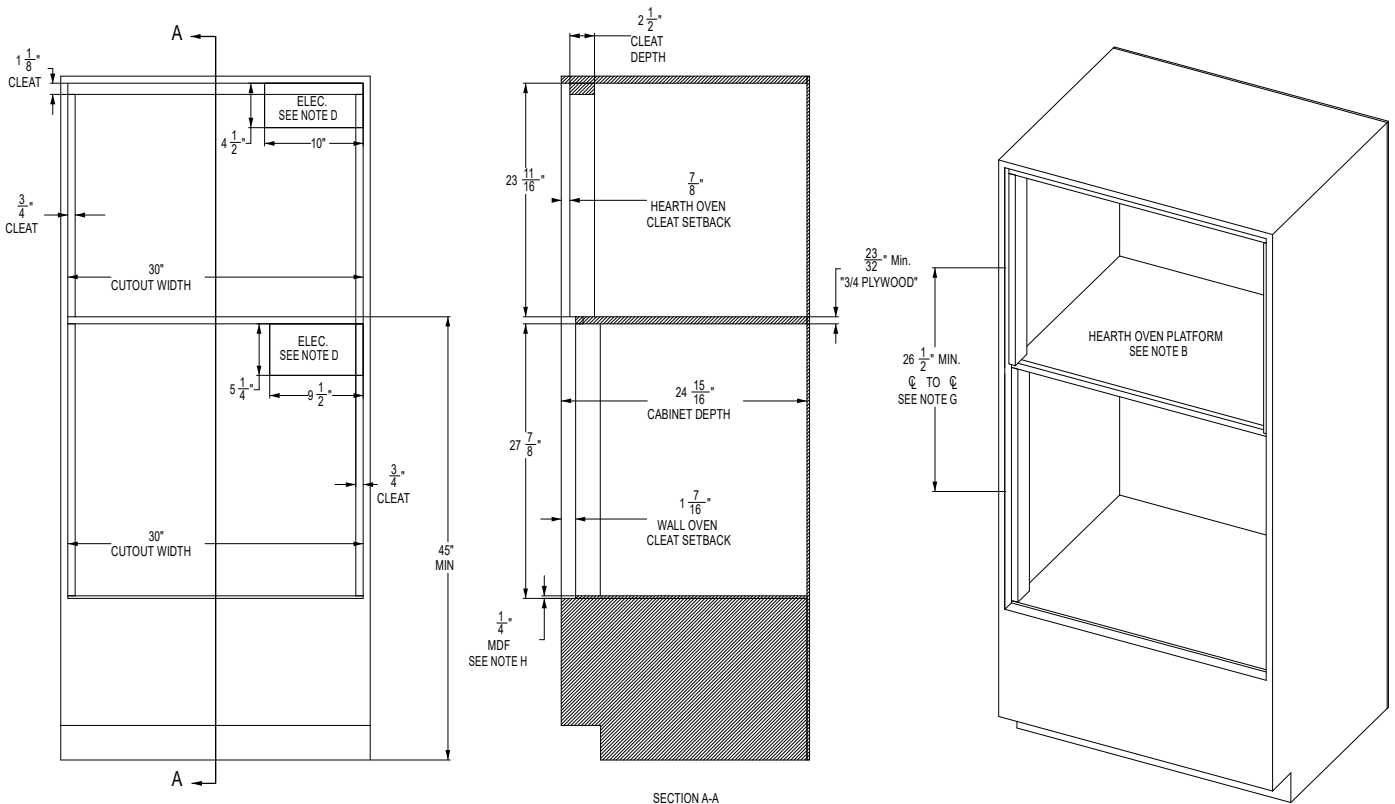
- A** 45" is the required minimum installation height. Oven may be installed higher based on owner preference.
- B** Hearth Oven Platform must be able to support 200 lbs. (91kg). For this installation, it is highly recommended to lock the platform into the side walls using wood joinery such as a Dado Joint. Fasteners and wood glue are also encouraged to further reinforce the locking wood joinery. The wood grain of the platform shall be oriented left to right. The front nose of the platform shall be a finished appearance surface. See illustrations 1Q & 1R for joinery concepts.
- C** Solid enclosure required on the top, bottom, left side, right side and back. The back surface may be drywall. Advanced fabrication and assembly techniques are strongly encouraged to ensure precise cabinet squareness and parallelism.
- D** Junction box location: Must be flush with back surface so as not to extend into the 23-1/2" cabinet depth. Junction box may also be located in an adjacent cabinet.
- E** A minimum 1/8" reveal BEYOND the OVERLAP dimensions is recommended for proper drawer and door operating clearance.
- F** Exterior cleats may be added to the sides and top of the Hearth Oven opening in order to bring the front surface of the Hearth Oven into alignment with the front surface of the wall oven below. Finish per customer requirements. A flat black finish may better match the side appearance of the oven below.
- G** For the LOWER WALL OVEN, an extruded aluminum LOWER VENT TRIM is encouraged. Wall oven models beginning with "ZTSX" already include the aluminum vent trim. For models beginning with "ZTS", the vent trim kit ZX30VT1 must be ordered which includes the aluminum vent trim and mounting hardware. Alternatively, the stainless-steel trim supplied with all models may be used in this cabinet configuration. Be sure to adjust the "overlap" dimension associated with the stainless-steel trim. Please call 1-800-626-2000 with any questions.
- H** The opening center line dimension is taken at the FRONT OPENING of each enclosure.



Installations

1 D HEARTH OVEN OVER WALL OVEN – FLUSH-INSET INSTALLATION WITH A MINIMUM GAP BETWEEN

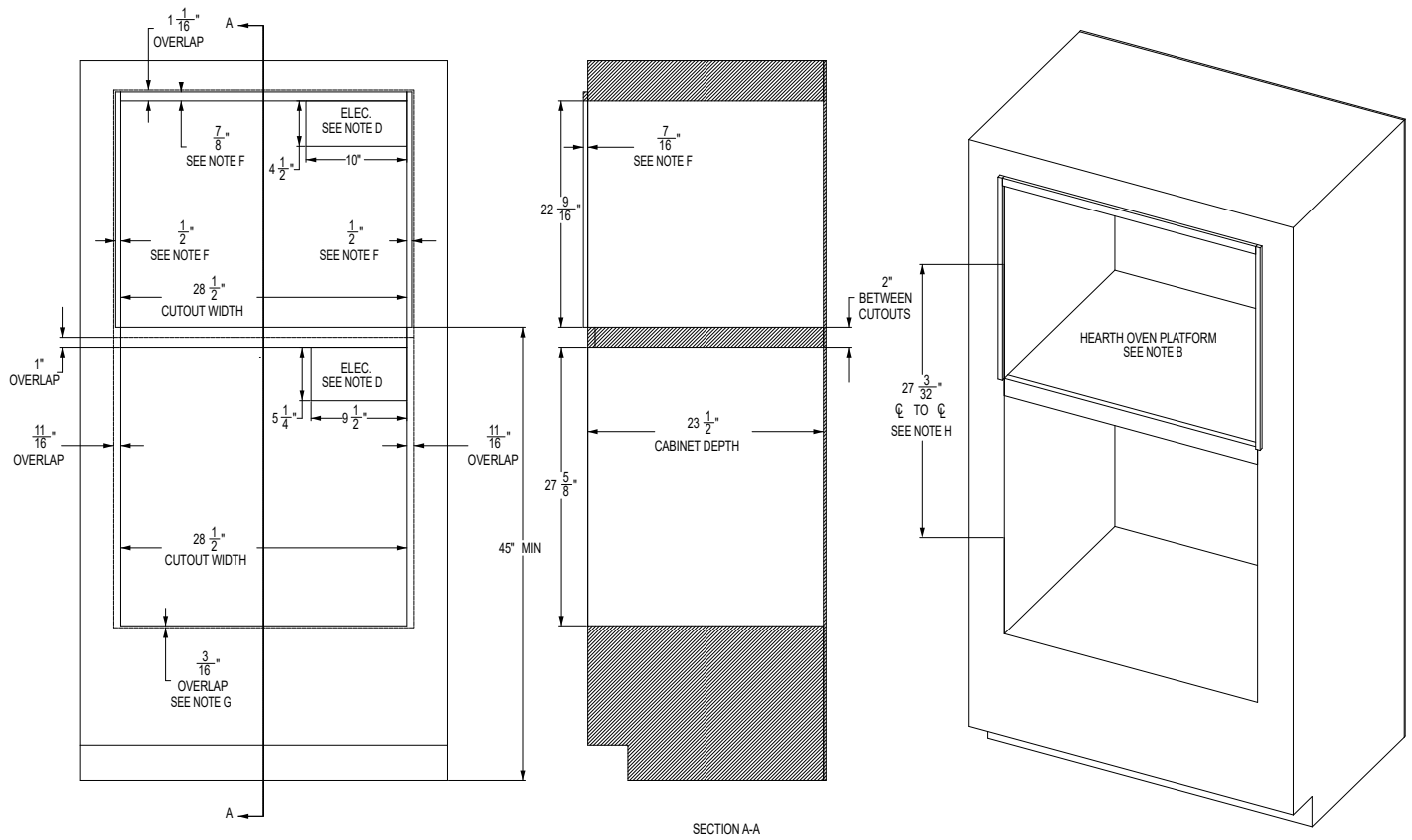
- A** 45" is the required minimum installation height. Oven may be installed higher based on owner preference.
- B** Hearth Oven Platform must be able to support 200 lbs. (91kg). For this installation, it is highly recommended to lock the platform into the side walls using wood joinery such as a Dado Joint. Fasteners and wood glue are also encouraged to further reinforce the locking wood joinery. The wood grain of the platform shall be oriented left to right. The front nose of the platform shall be a finished appearance surface. See illustrations 1Q & 1R for joinery concepts.
- C** Solid enclosure required on the top, bottom, left side, right side and back. The back surface may be drywall. Advanced fabrication and assembly techniques are strongly encouraged to ensure precise cabinet squareness and parallelism.
- D** Junction box location: Must be flush with back surface so as not to extend into the 24-15/16" cabinet depth. Junction box may also be located in an adjacent cabinet.
- E** The front surface of the interior cleats shall be a finished appearance surface.
- F** The Wall Oven REQUIRES an extruded aluminum LOWER VENT TRIM. Wall oven models beginning with "ZTSX" already include the aluminum vent trim. For models beginning with "ZTS", the vent trim kit ZX30VT1 must be ordered which includes the aluminum vent trim and mounting hardware. Please call 1-800-626-2000 with any questions.
- G** The opening center line dimension is taken at the FRONT OPENING of each enclosure.
- H** Wall Oven bottom surface cleat is to be 1/4" thick MDF fiber board or equivalent.



Installations

1 E HEARTH OVEN OVER WALL OVEN –STANDARD INSTALLATION WITH A 2” PLATFORM BETWEEN

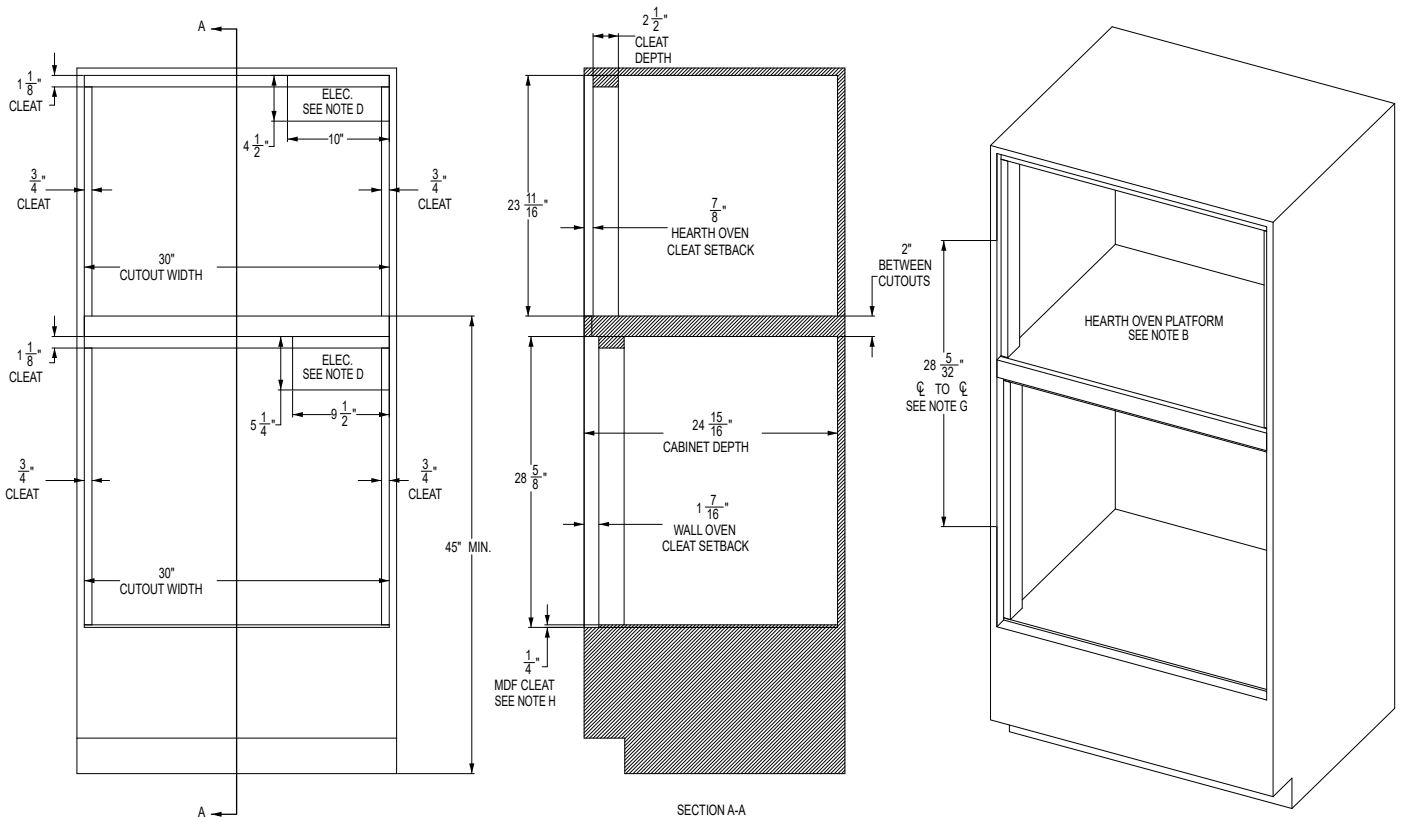
- A** 45” is the required minimum installation height. Oven may be installed higher based on owner preference.
- B** Hearth Oven Platform must be able to support 200 lbs. (91kg).
- C** Solid enclosure required on the top, bottom, left side, right side and back. The back surface may be drywall. Advanced fabrication and assembly techniques are strongly encouraged to ensure precise cabinet squareness and parallelism.
- D** Junction box location: Must be flush with back surface so as not to extend into the 23-1/2” cabinet depth. Junction box may also be located in an adjacent cabinet.
- E** A minimum 1/8” reveal BEYOND the OVERLAP dimensions is recommended for proper drawer and door operating clearance.
- F** Exterior cleats may be added to the sides and top of the Hearth Oven opening in order to bring the front surface of the Hearth Oven into alignment with the front surface of the wall oven below. Finish per customer requirements. A flat black finish may better match the side appearance of the oven below.
- G** For the LOWER WALL OVEN, an extruded aluminum LOWER VENT TRIM is encouraged. Wall oven models beginning with “ZTSX” already include the aluminum vent trim. For models beginning with “ZTS”, the vent trim kit ZX30VT1 must be ordered which includes the aluminum vent trim and mounting hardware. Alternatively, the stainless-steel trim supplied with all models may be used in this cabinet configuration. Be sure to adjust the “overlap” dimension associated with the stainless-steel trim. Please call 1-800-626-2000 with any questions.
- H** The opening center line dimension is taken at the FRONT OPENING of each enclosure.



Installations

1 F HEARTH OVEN OVER WALL OVEN – FLUSH-INSET INSTALLATION WITH A 2" PLATFORM BETWEEN

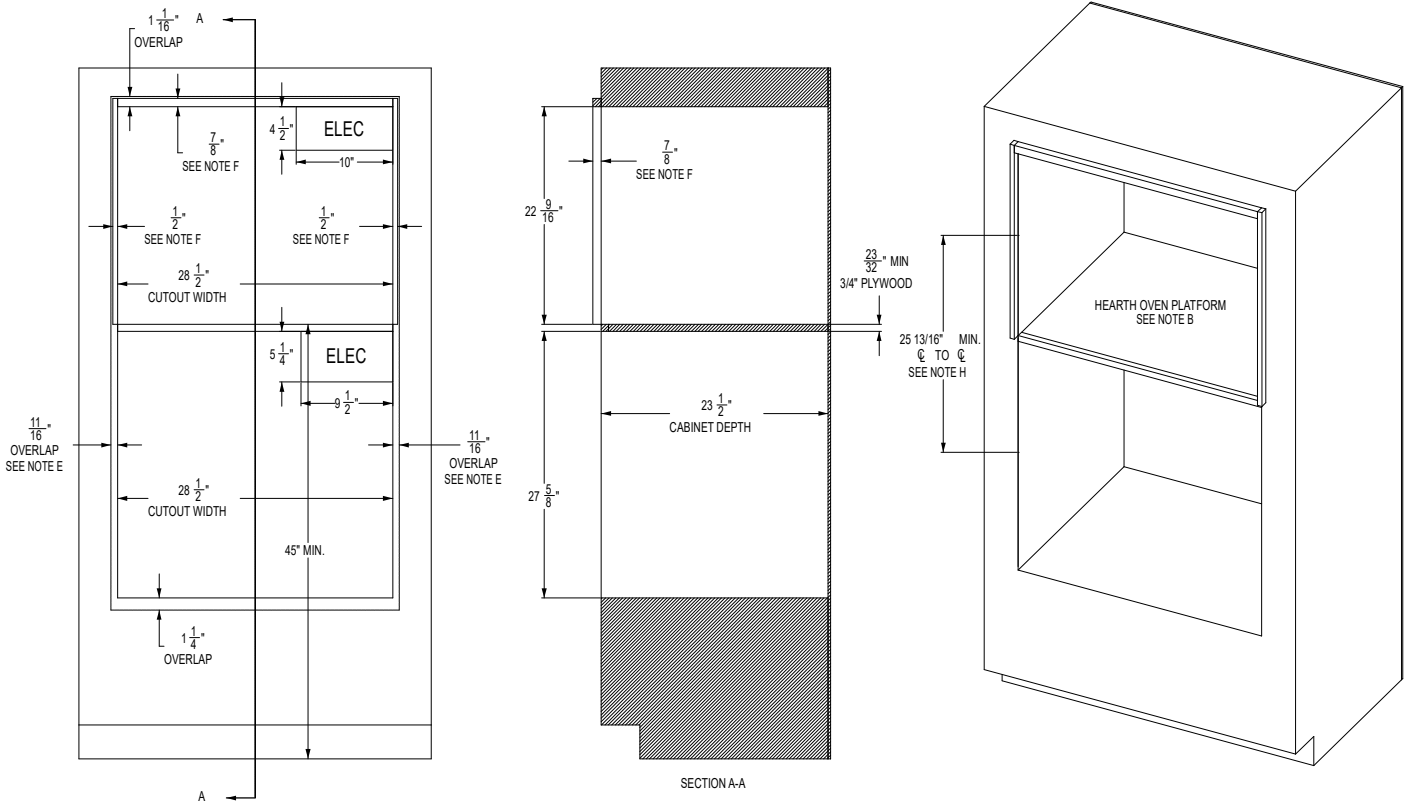
- A** 45" is the required minimum installation height. Oven may be installed higher based on owner preference.
- B** Hearth Oven Platform must be able to support 200 lbs. (91kg).
- C** Solid enclosure required on the top, bottom, left side, right side and back. The back surface may be drywall. Advanced fabrication and assembly techniques are strongly encouraged to ensure precise cabinet squareness and parallelism.
- D** Junction box location: Must be flush with back surface so as not to extend into the 24-15/16" cabinet depth. Junction box may also be located in an adjacent cabinet.
- E** The front surface of the interior cleats shall be a finished appearance surface.
- F** The Wall Oven REQUIRES an extruded aluminum LOWER VENT TRIM. Wall oven models beginning with "ZTSX" already include the aluminum vent trim. For models beginning with "ZTS", the vent trim kit ZX30VT1 must be ordered which includes the aluminum vent trim and mounting hardware. Please call 1-800-626-2000 with any questions.
- G** The opening center line dimension is taken at the FRONT OPENING of each enclosure.
- H** Wall Oven bottom surface cleat is to be 1/4" thick MDF fiber board or equivalent.



Installations

1 G HEARTH OVEN OVER FRENCH DOOR WALL OVEN –STANDARD INSTALLATION WITH A MINIMUM GAP BETWEEN

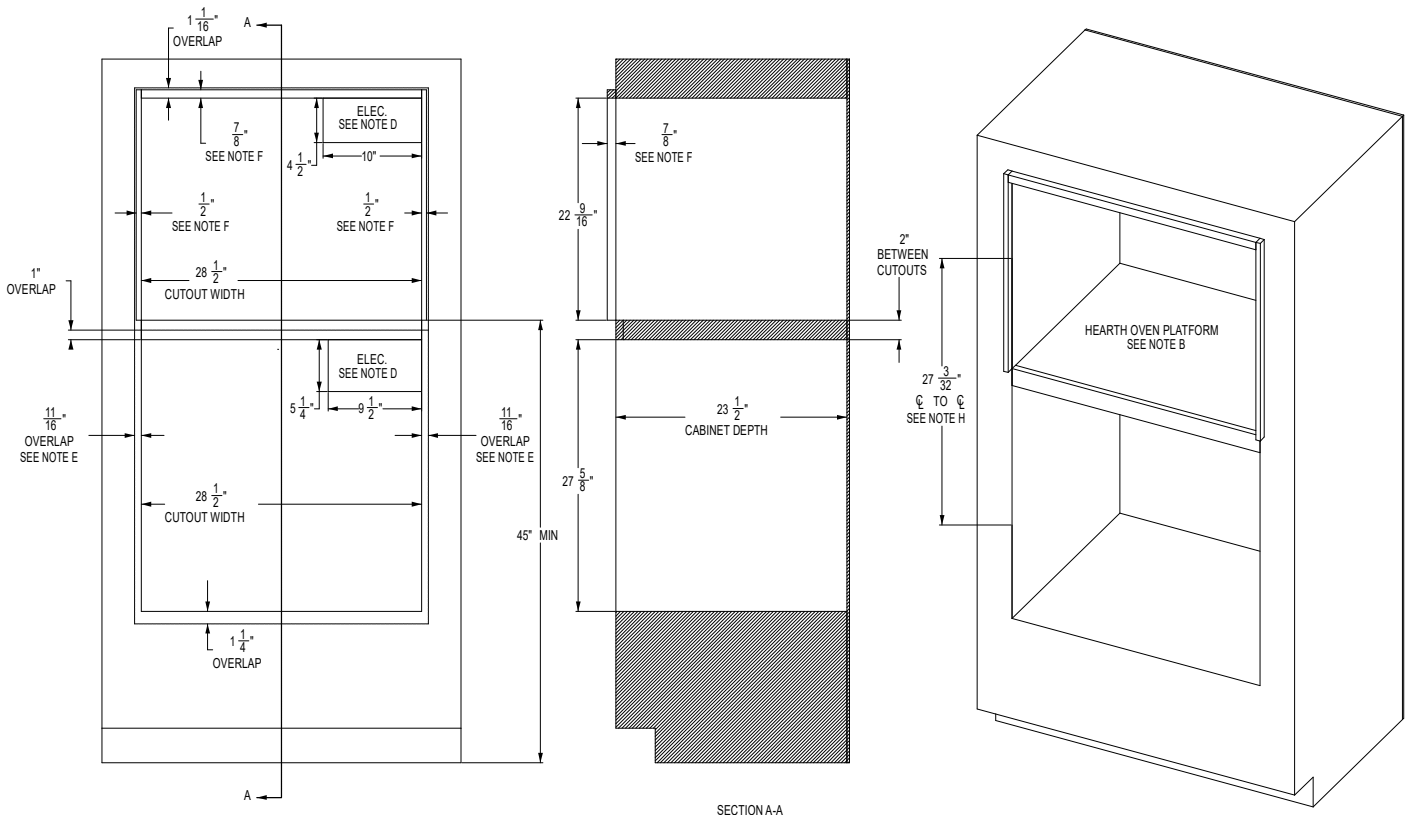
- A** 45" is the required minimum installation height. Oven may be installed higher based on owner preference.
- B** Hearth Oven Platform must be able to support 200 lbs. (91kg).
- C** Solid enclosure required on the top, bottom, left side, right side and back. The back surface may be drywall. Advanced fabrication and assembly techniques are strongly encouraged to ensure precise cabinet squareness and parallelism.
- D** Junction box location: Must be flush with back surface so as not to extend into the 23-1/2" cabinet depth. Junction box may also be located in an adjacent cabinet.
- E** A minimum 1/8" reveal BEYOND the OVERLAP dimensions is recommended for proper drawer and door operating clearance. For the Lower FRENCH DOOR WALL OVEN, please carefully refer to the door opening restrictions associated with nearby countertops, walls and cabinet fronts to adjust the overlap value accordingly.
- F** Exterior cleats may be added to the sides and top of the Hearth Oven opening in order to bring the front surface of the Hearth Oven into alignment with the front surface of the wall oven below. Finish per customer requirements. A flat black finish may better match the side appearance of the oven below.
- G** For the FRENCH DOOR WALL OVEN, the stainless-steel LOWER TRIM supplied with the unit is the only option.
- H** The opening center line dimension is taken at the FRONT OPENING of each enclosure.



Installations

1 H HEARTH OVEN OVER FRENCH DOOR WALL OVEN –STANDARD INSTALLATION WITH A 2” PLATFORM BETWEEN

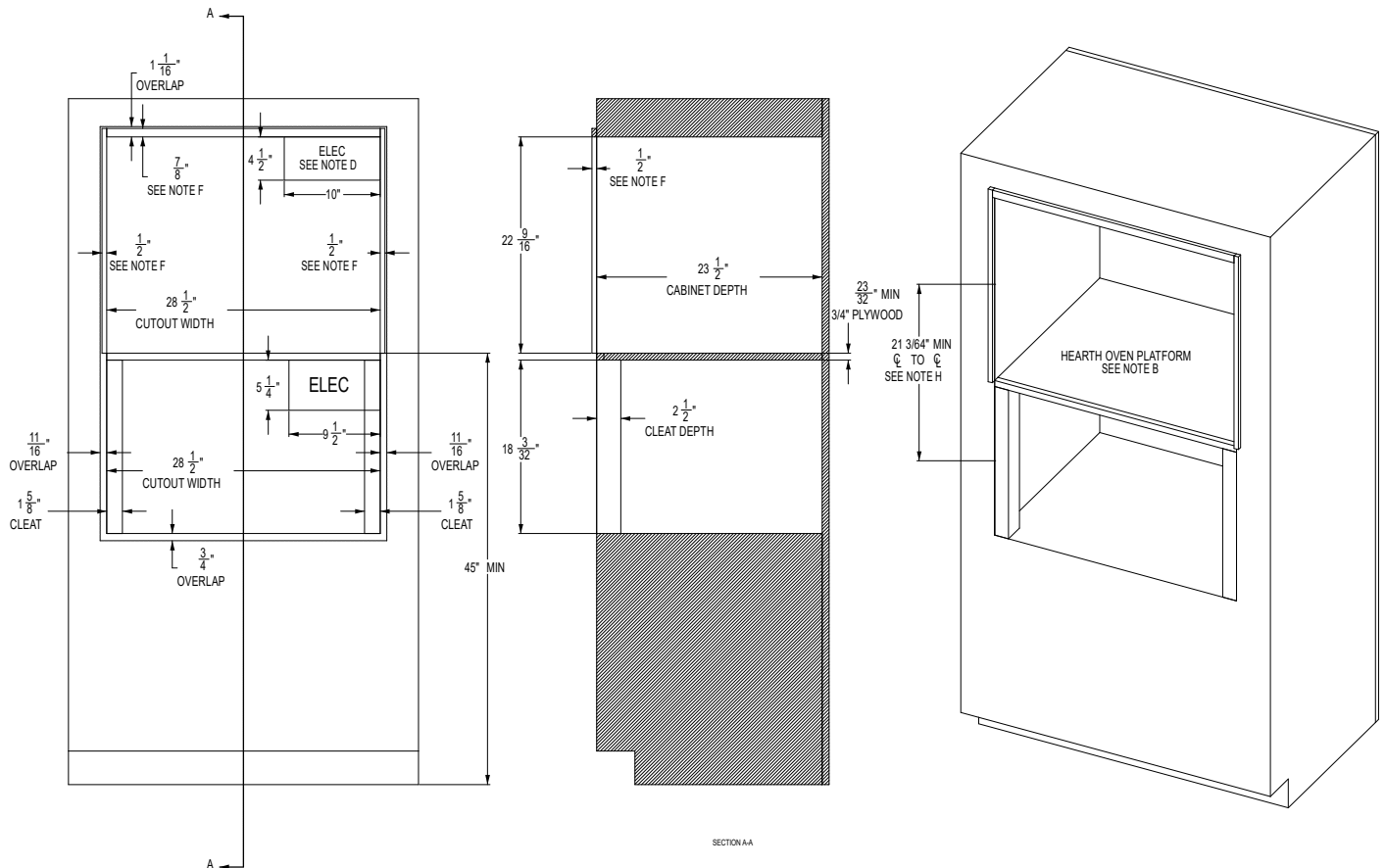
- A** 45” is the required minimum installation height. Oven may be installed higher based on owner preference.
- B** Hearth Oven Platform must be able to support 200 lbs. (91kg).
- C** Solid enclosure required on the top, bottom, left side, right side and back. The back surface may be drywall. Advanced fabrication and assembly techniques are strongly encouraged to ensure precise cabinet squareness and parallelism.
- D** Junction box location: Must be flush with back surface so as not to extend into the 23-1/2” cabinet depth. Junction box may also be located in an adjacent cabinet.
- E** A minimum 1/8” reveal BEYOND the OVERLAP dimensions is recommended for proper drawer and door operating clearance. For the Lower FRENCH DOOR WALL OVEN, please carefully refer to the door opening restrictions associated with nearby countertops, walls and cabinet fronts to adjust the overlap value accordingly.
- F** Exterior cleats may be added to the sides and top of the Hearth Oven opening in order to bring the front surface of the Hearth Oven into alignment with the front surface of the wall oven below. Finish per customer requirements. A flat black finish may better match the side appearance of the oven below.
- G** For the FRENCH DOOR WALL OVEN, the stainless-steel LOWER TRIM supplied with the unit is the only option.
- H** The opening center line dimension is taken at the FRONT OPENING of each enclosure.



Installations

1 I HEARTH OVEN OVER STEAM OVEN –STANDARD INSTALLATION WITH A MINIMUM GAP BETWEEN

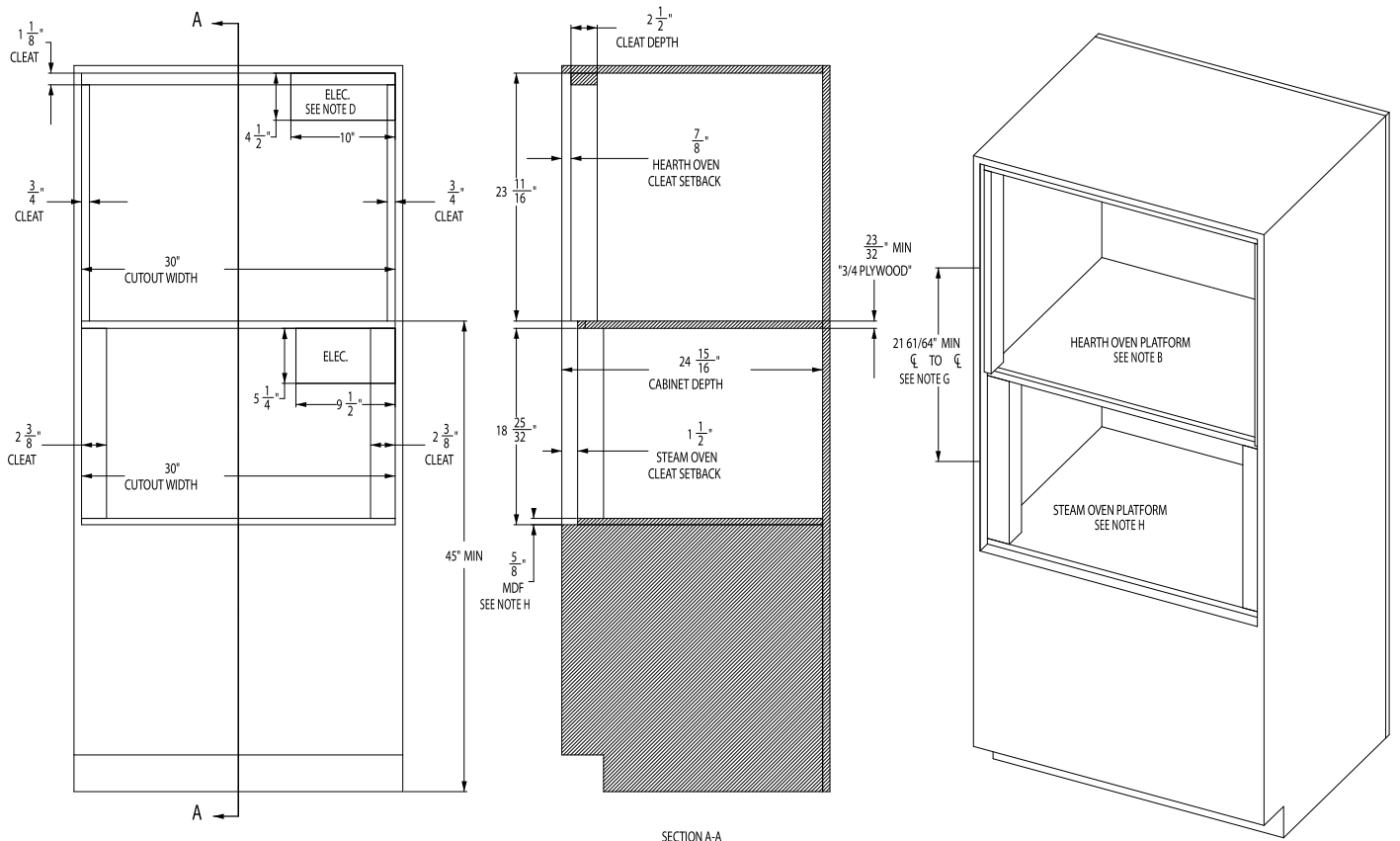
- A** 45" is the required minimum installation height. Oven may be installed higher based on owner preference.
- B** Hearth Oven Platform must be able to support 200 lbs. (91kg). For this installation, it is highly recommended to lock the platform into the side walls using wood joinery such as a Dado Joint. Fasteners and wood glue are also encouraged to further reinforce the locking wood joinery. The wood grain of the platform shall be oriented left to right. The front nose of the platform shall be a finished appearance surface. See illustrations 1Q & 1R for joinery concepts.
- C** Solid enclosure required on the top, bottom, left side, right side and back. The back surface may be drywall. Advanced fabrication and assembly techniques are strongly encouraged to ensure precise cabinet squareness and parallelism.
- D** Junction box location: Must be flush with back surface so as not to extend into the 23-1/2" cabinet depth. Junction box may also be located in an adjacent cabinet.
- E** A minimum 1/8" reveal BEYOND the OVERLAP dimensions is recommended for proper drawer and door operating clearance.
- F** Exterior cleats may be added to the sides and top of the Hearth Oven opening in order to bring the front surface of the Hearth Oven into alignment with the front surface of the wall oven below. Finish per customer requirements. A flat black finish may better match the side appearance of the oven below.
- G** A LOWER VENT TRIM option is NOT available for this cabinet configuration.
- H** The opening center line dimension is taken at the FRONT OPENING of each enclosure.



Installations

1 J HEARTH OVEN OVER STEAM OVEN – FLUSH-INSET INSTALLATION WITH A MINIMUM GAP BETWEEN

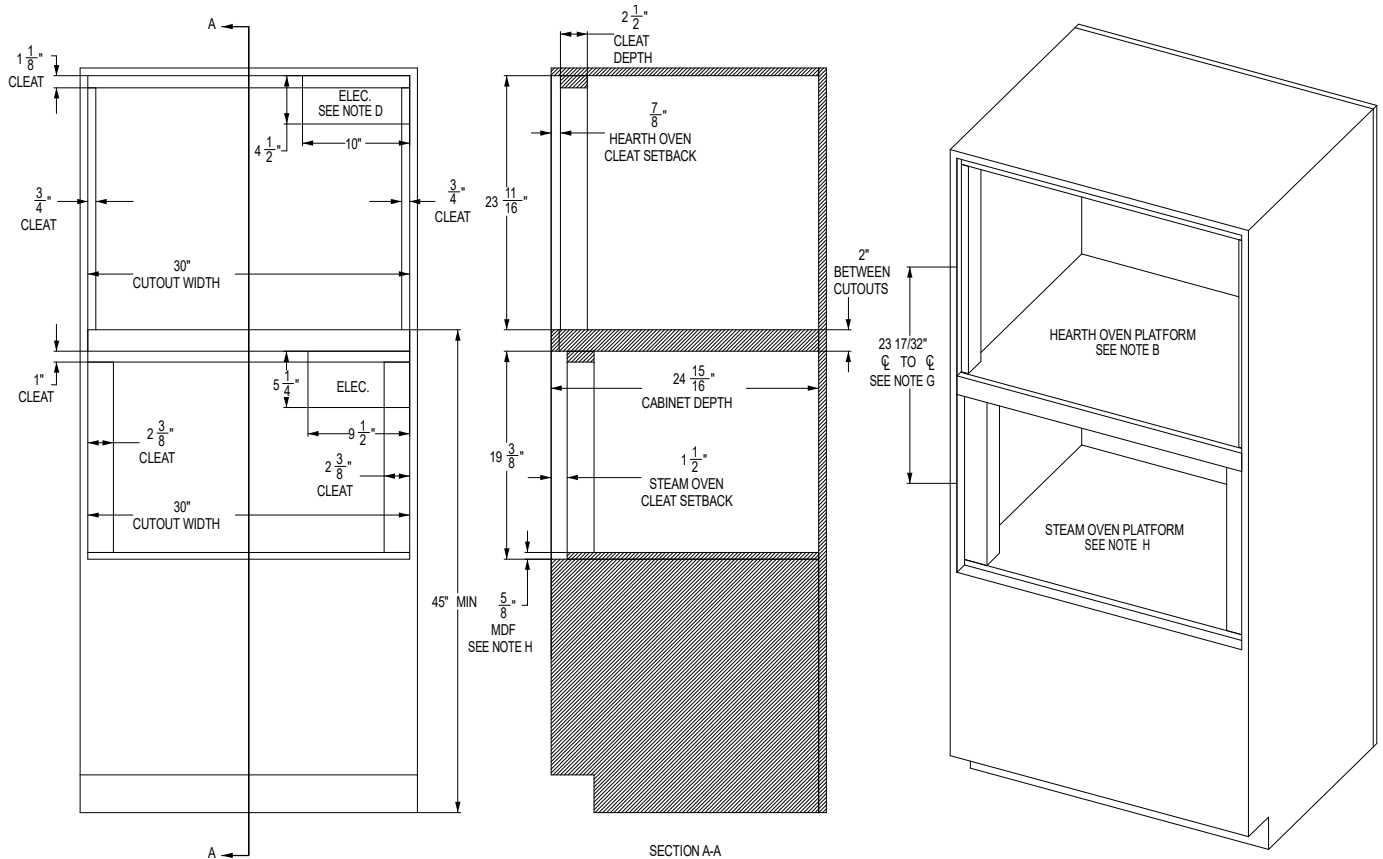
- A** 45" is the required minimum installation height. Oven may be installed higher based on owner preference.
- B** Hearth Oven Platform must be able to support 200 lbs. (91kg). For this installation, it is highly recommended to lock the platform into the side walls using wood joinery such as a Dado Joint. Fasteners and wood glue are also encouraged to further reinforce the locking wood joinery. The wood grain of the platform shall be oriented left to right. The front nose of the platform shall be a finished appearance surface. See illustrations 1Q & 1R for joinery concepts.
- C** Solid enclosure required on the top, bottom, left side, right side and back. The back surface may be drywall. Advanced fabrication and assembly techniques are strongly encouraged to ensure precise cabinet squareness and parallelism.
- D** Junction box location: Must be flush with back surface so as not to extend into the 24-15/16" cabinet depth. Junction box may also be located in an adjacent cabinet.
- E** The front surface of the interior cleats shall be a finished appearance surface.
- F** An optional LOWER TRIM KIT may be installed with a CUT OUT OPENING & BOTTOM CLEAT height changes. Trim kit ZXSTEAM1 can be used with a CUT OUT OPENING height of 19-25/32" and a BOTTOM CLEAT height of 1-5/8". Please call 1-800-626-2000 with any questions.
- G** The opening center line dimension is taken at the FRONT OPENING of each enclosure.
- H** Steam Oven bottom surface cleat is to be 5/8" thick MDF fiber board or equivalent.



Installations

1 L HEARTH OVEN OVER STEAM OVEN – FLUSH-INSET INSTALLATION WITH A 2" PLATFORM BETWEEN

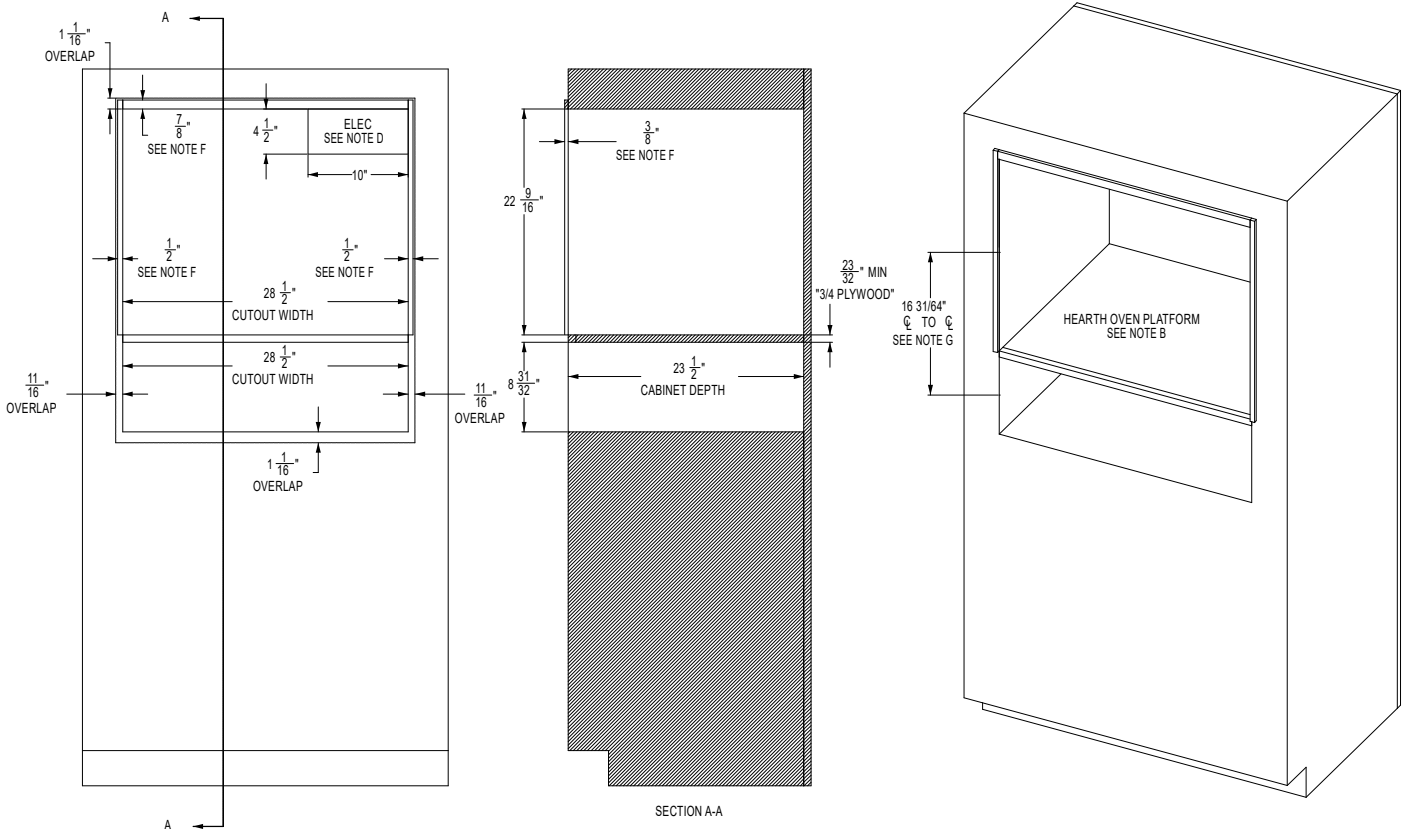
- A** 45" is the required minimum installation height. Oven may be installed higher based on owner preference.
- B** Hearth Oven Platform must be able to support 200 lbs. (91kg).
- C** Solid enclosure required on the top, bottom, left side, right side and back. The back surface may be drywall. Advanced fabrication and assembly techniques are strongly encouraged to ensure precise cabinet squareness and parallelism.
- D** Junction box location: Must be flush with back surface so as not to extend into the 24-15/16" cabinet depth. Junction box may also be located in an adjacent cabinet.
- E** The front surface of the interior cleats shall be a finished appearance surface.
- F** An optional LOWER TRIM KIT may be installed with a CUT OUT OPENING & BOTTOM CLEAT height changes. Trim kit ZXSTEAM1 can be used with a CUT OUT OPENING height of 20-3/8" and a BOTTOM CLEAT height of 1-5/8". Please call 1-800-626-2000 with any questions.
- G** The opening center line dimension is taken at the FRONT OPENING of each enclosure.
- H** Steam Oven bottom surface cleat is to be 5/8" thick MDF fiber board or equivalent.



Installations

1 M HEARTH OVEN OVER WARMING DRAWER –STANDARD INSTALLATION WITH A MINIMUM GAP BETWEEN

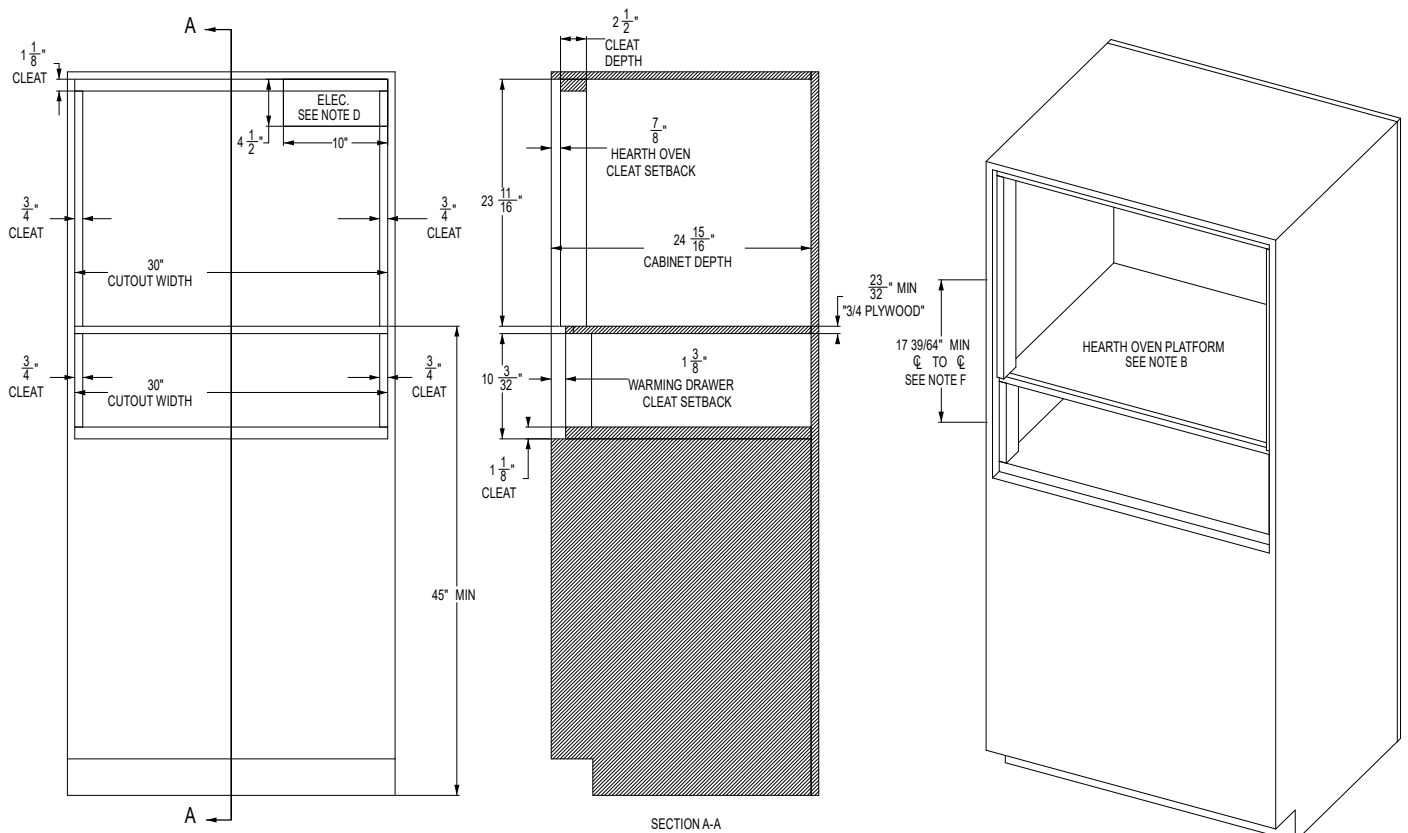
- A** 45" is the required minimum installation height. Oven may be installed higher based on owner preference.
- B** Hearth Oven Platform must be able to support 200 lbs. (91kg). For this installation, it is highly recommended to lock the platform into the side walls using wood joinery such as a Dado Joint. Fasteners and wood glue are also encouraged to further reinforce the locking wood joinery. The wood grain of the platform shall be oriented left to right. The front nose of the platform shall be a finished appearance surface. See illustrations 1Q & 1R for joinery concepts.
- C** Solid enclosure required on the top, bottom, left side, right side and back. The back surface may be drywall. Advanced fabrication and assembly techniques are strongly encouraged to ensure precise cabinet squareness and parallelism.
- D** Junction box location: Must be flush with back surface so as not to extend into the 23-1/2" cabinet depth. Junction box may also be located in an adjacent cabinet.
- E** A minimum 1/8" reveal BEYOND the OVERLAP dimensions is recommended for proper drawer and door operating clearance.
- F** Exterior cleats may be added to the sides and top of the Hearth Oven opening in order to bring the front surface of the Hearth Oven into alignment with the front surface of the wall oven below. Finish per customer requirements. A flat black finish may better match the side appearance of the oven below.
- G** The opening center line dimension is taken at the FRONT OPENING of each enclosure.



Installations

1 N HEARTH OVEN OVER WARMING DRAWER – FLUSH-INSET INSTALLATION WITH A MINIMUM GAP BETWEEN

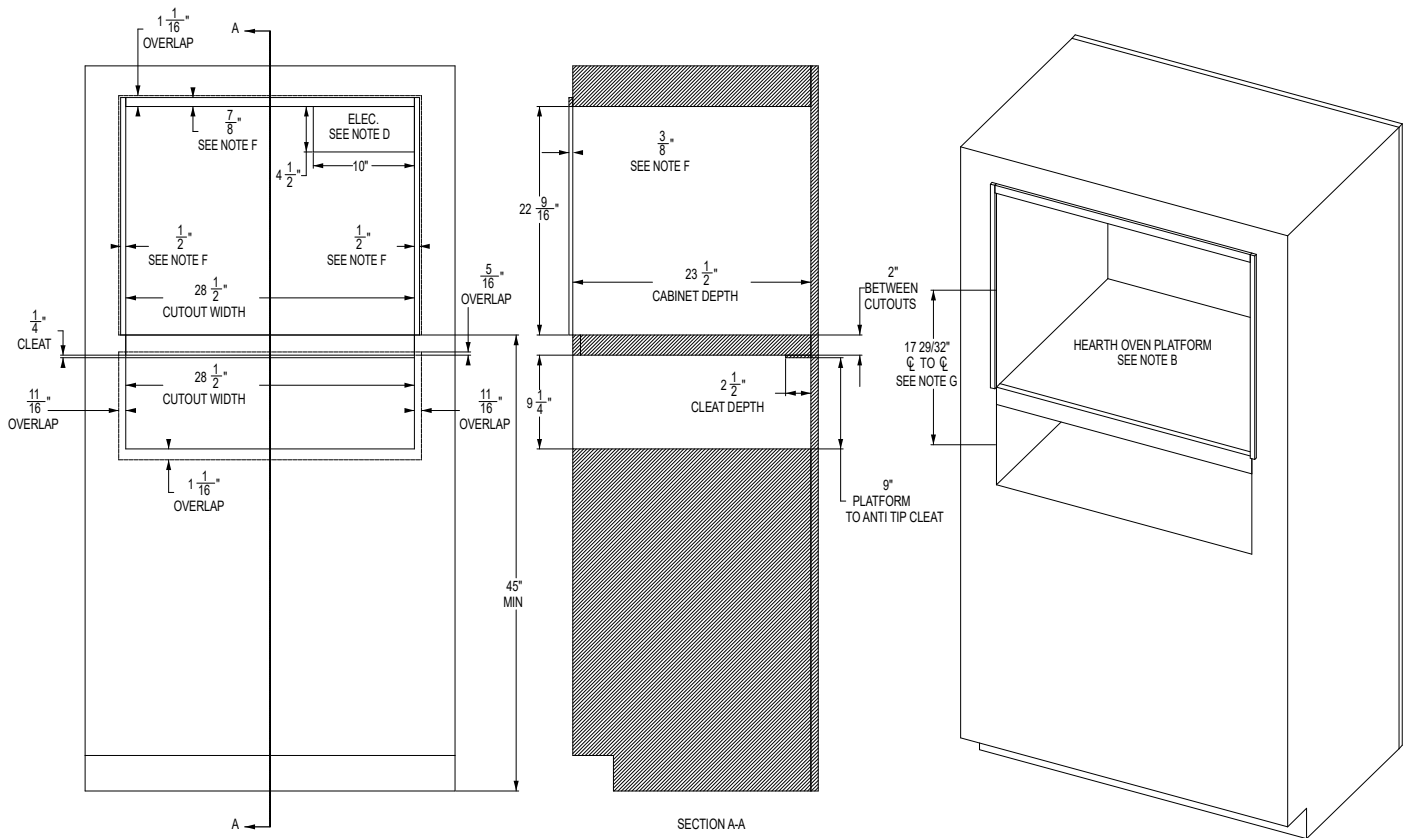
- A** 45" is the required minimum installation height. Oven may be installed higher based on owner preference.
- B** Hearth Oven Platform must be able to support 200 lbs. (91kg). For this installation, it is highly recommended to lock the platform into the side walls using wood joinery such as a Dado Joint. Fasteners and wood glue are also encouraged to further reinforce the locking wood joinery. The wood grain of the platform shall be oriented left to right. The front nose of the platform shall be a finished appearance surface. See illustrations 1Q & 1R for joinery concepts.
- C** Solid enclosure required on the top, bottom, left side, right side and back. The back surface may be drywall. Advanced fabrication and assembly techniques are strongly encouraged to ensure precise cabinet squareness and parallelism.
- D** Junction box location: Must be flush with back surface so as not to extend into the 24-15/16" cabinet depth. Junction box may also be located in an adjacent cabinet.
- E** The front surface of the interior cleats shall be a finished appearance surface.
- F** The opening center line dimension is taken at the FRONT OPENING of each enclosure.



Installations

1 O HEARTH OVEN OVER WARMING DRAWER –STANDARD INSTALLATION WITH A 2" PLATFORM BETWEEN

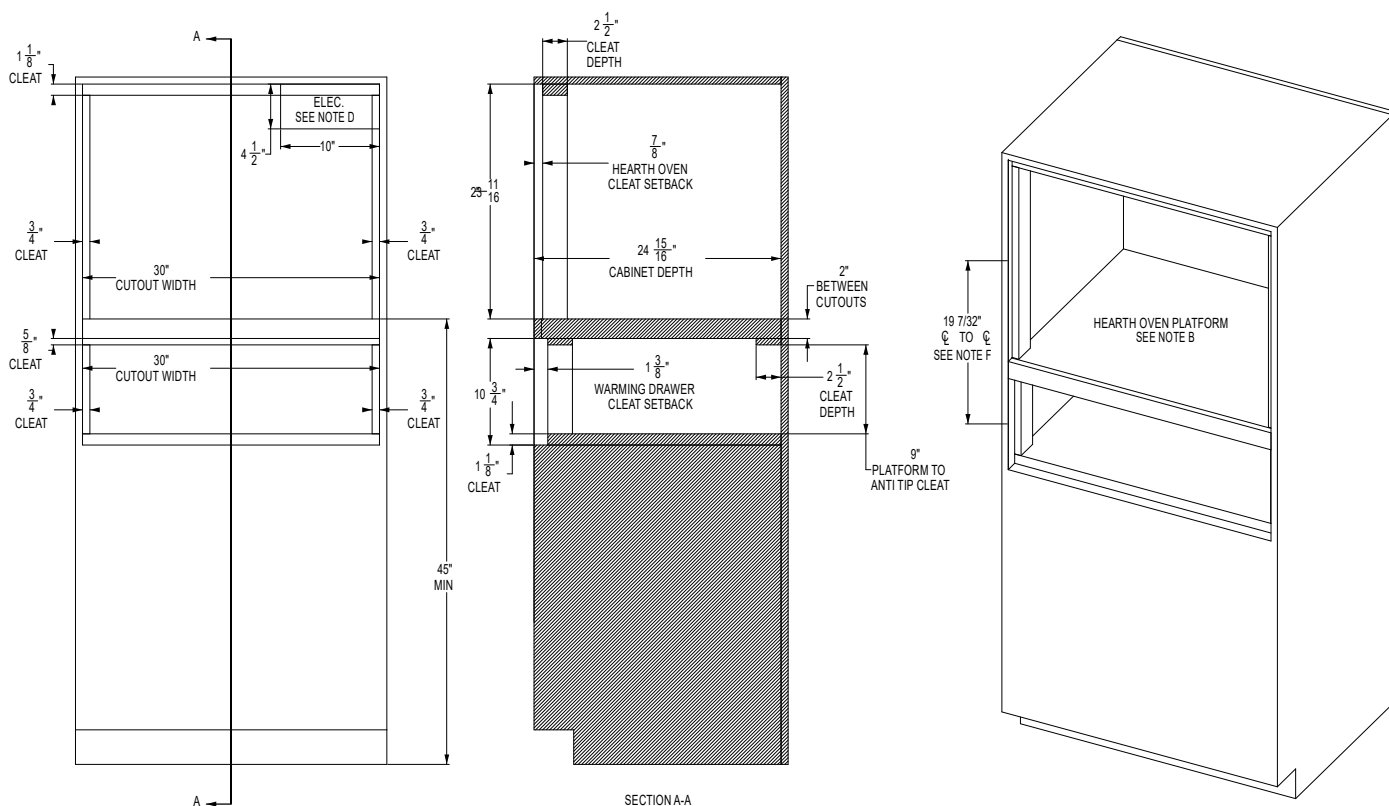
- A** 45" is the required minimum installation height. Oven may be installed higher based on owner preference.
- B** Hearth Oven Platform must be able to support 200 lbs. (91kg).
- C** Solid enclosure required on the top, bottom, left side, right side and back. The back surface may be drywall. Advanced fabrication and assembly techniques are strongly encouraged to ensure precise cabinet squareness and parallelism.
- D** Junction box location: Must be flush with back surface so as not to extend into the 23-1/2" cabinet depth. Junction box may also be located in an adjacent cabinet.
- E** A minimum 1/8" reveal BEYOND the OVERLAP dimensions is recommended for proper drawer and door operating clearance.
- F** Exterior cleats may be added to the sides and top of the Hearth Oven opening in order to bring the front surface of the Hearth Oven into alignment with the front surface of the wall oven below. Finish per customer requirements. A flat black finish may better match the side appearance of the oven below.
- G** The opening center line dimension is taken at the FRONT OPENING of each enclosure.



Installations

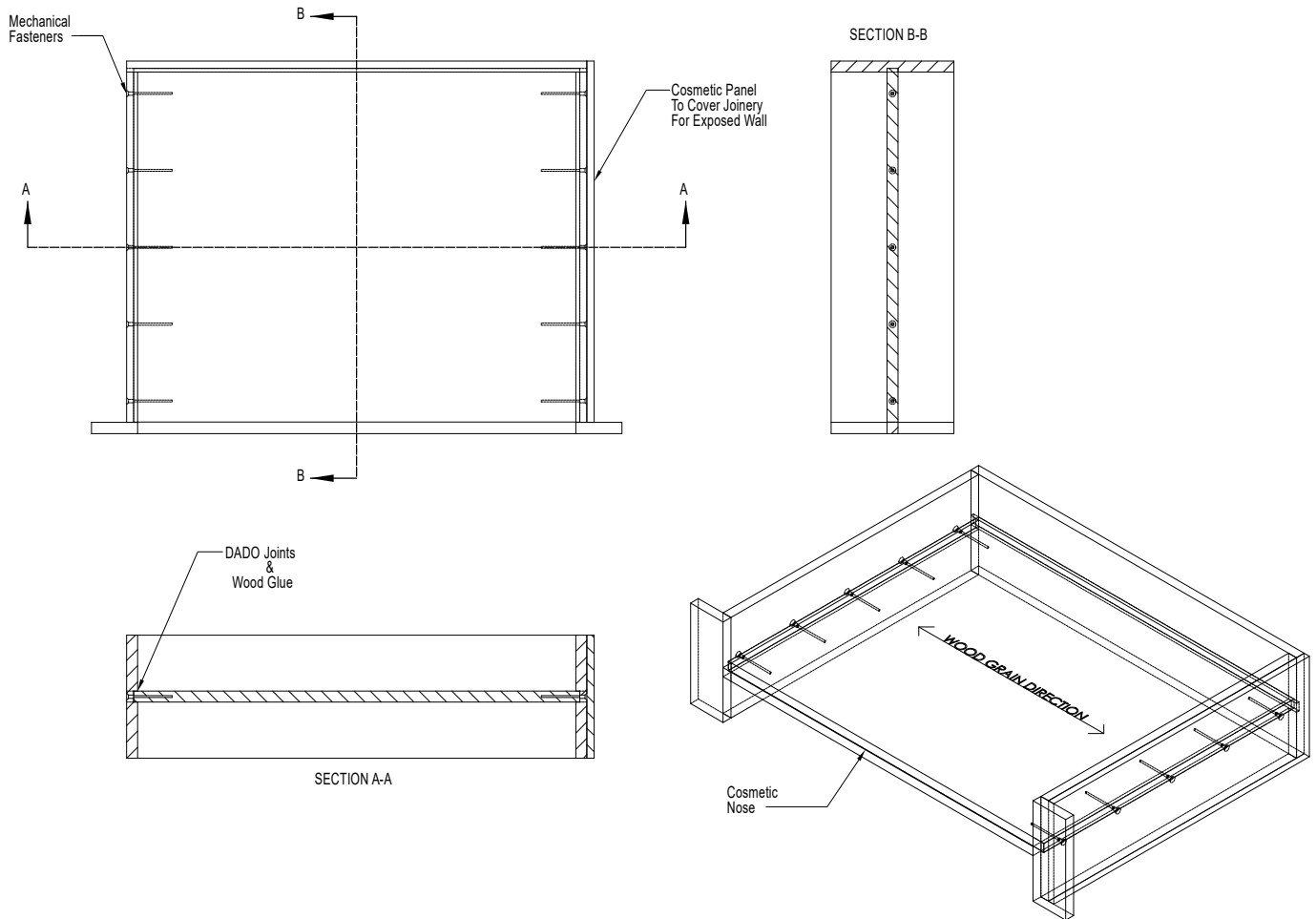
1 P HEARTH OVEN OVER WARMING DRAWER – FLUSH-INSET INSTALLATION WITH A 2” PLATFORM BETWEEN

- A** 45” is the required minimum installation height. Oven may be installed higher based on owner preference.
- B** Hearth Oven Platform must be able to support 200 lbs. (91kg).
- C** Solid enclosure required on the top, bottom, left side, right side and back. The back surface may be drywall. Advanced fabrication and assembly techniques are strongly encouraged to ensure precise cabinet squareness and parallelism.
- D** Junction box location: Must be flush with back surface so as not to extend into the 24-15/16” cabinet depth. Junction box may also be located in an adjacent cabinet.
- E** The front surface of the interior cleats shall be a finished appearance surface.
- F** The opening center line dimension is taken at the FRONT OPENING of each enclosure.



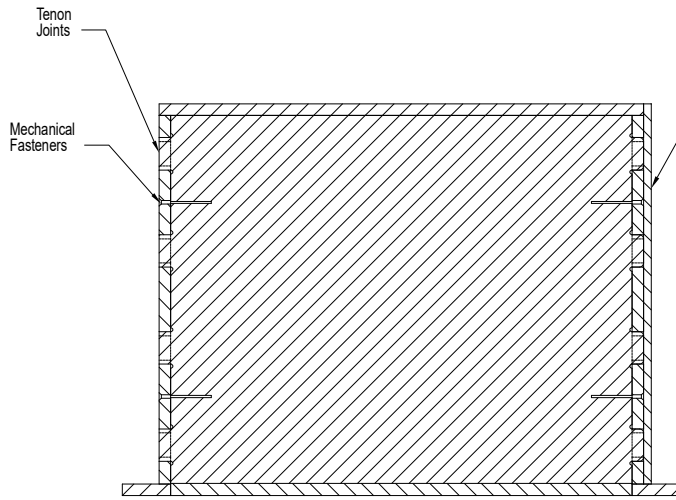
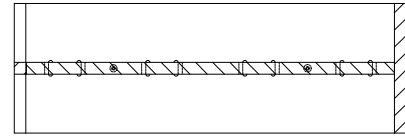
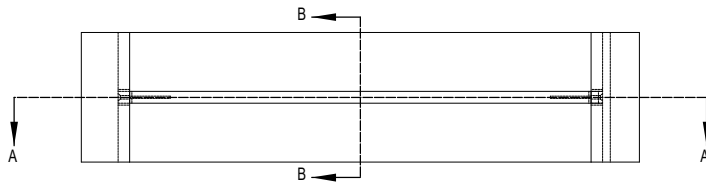
Installations

1 Q HEARTH OVEN PLATFORM FOR MINIMUM GAP BETWEEN APPLIANCES: DADO & MECHANICAL FASTENER CONCEPT

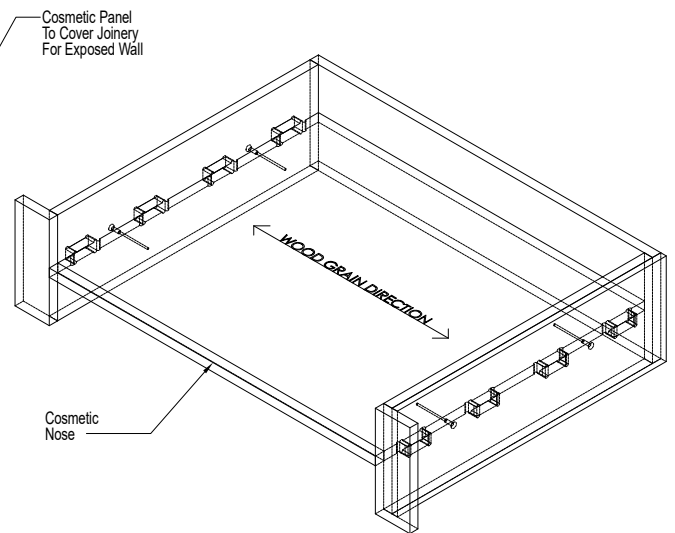


Installations

1 R HEARTH OVEN PLATFORM FOR MINIMUM GAP BETWEEN APPLIANCES: TENON & MECHANICAL FASTENER CONCEPT



SECTION A-A



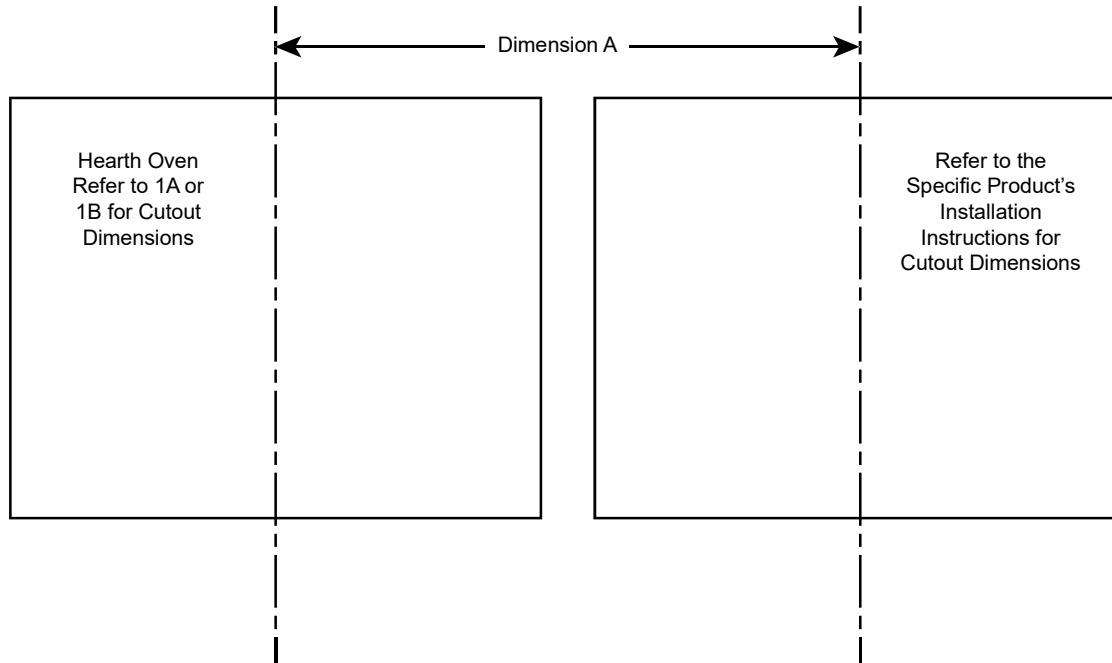
Installations

1 S SIDE-BY-SIDE COMBO INSTALLATION

For a list of products compatible with Hearth Oven Side-by-Side Installation check online at geappliances.com/combinations.

Please refer to the installation literature of both units for such installations.

For assistance with cabinet design please connect with a Monogram Designer.



| Oven Type | Min. Distance - Dimension A Product to Product Centerlines |
|---|--|
| Hearth Oven next to Wall Oven | 30.5" |
| Hearth Oven next to Steam Oven | 30.5" |
| Hearth Oven next to French Door Wall Oven | 42.5" |

Installation

2 ELECTRICAL CONNECTIONS

ATTENTION INSTALLER

All electric wall ovens must be hard wired (direct wired) into an approved junction box. A plug and receptacle is NOT permitted on these products.

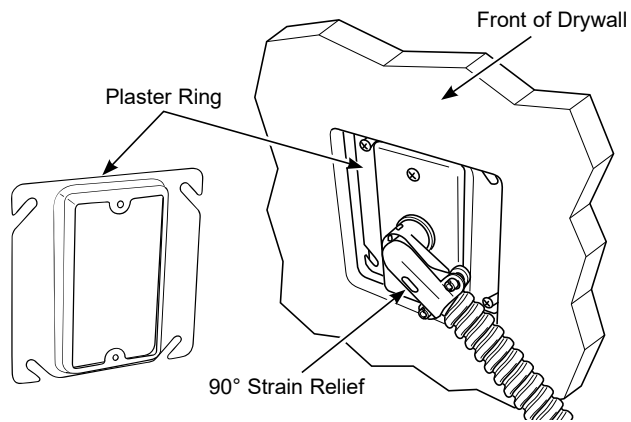
Do not shorten the flexible conduit. The conduit strain relief clamp must be securely attached to the junction box and the flexible conduit must be securely attached to the clamp. If the flexible conduit will not fit within the clamp, do not install the oven until a clamp of the proper size is obtained.

NOTE TO ELECTRICIAN: The 3 power leads supplied with this appliance are UL recognized for connection to heavier gauge household wiring. The insulation of these 3 leads is rated at temperatures much higher than the temperature rating of household wiring. The current carrying capacity of the conductor is governed by the wire gauge and the temperature rating of the insulation around the wire.

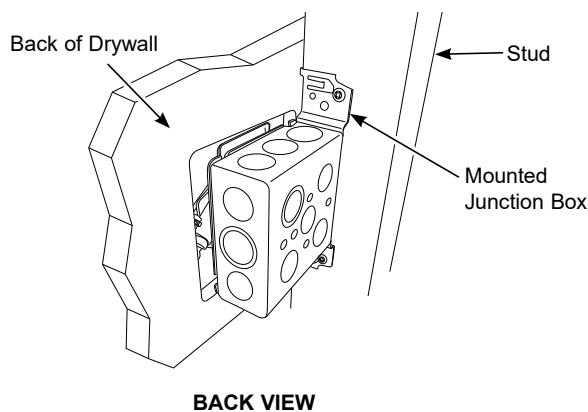
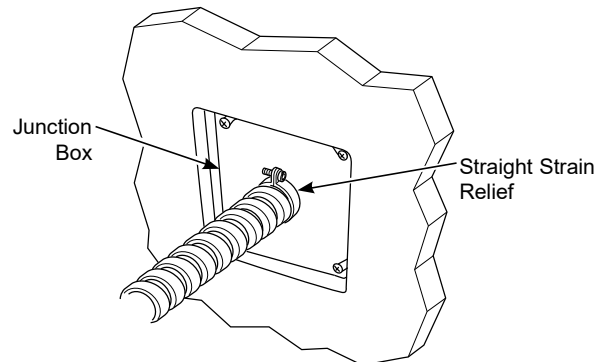
⚠ WARNING Improper connection of aluminum house wiring to copper leads can result in an electrical hazard or fire. Use only connectors designed for joining copper to aluminum and follow the manufacturer's recommended procedure closely.

RECOMMENDED INSTALLATION OPTIONS

Option 1 - A junction box with a plaster ring and 90° strain relief, mounted to a stud behind the drywall.



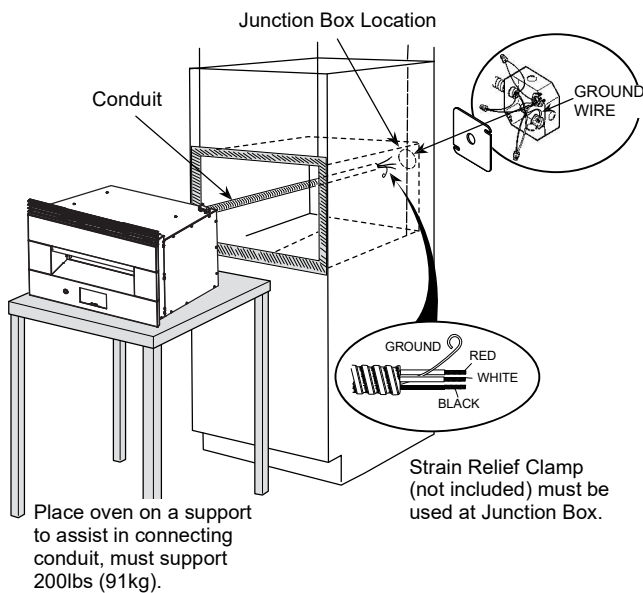
Option 2 - Standard junction box with a straight strain relief, mounted to a stud behind the drywall.



Installation

2 ELECTRICAL CONNECTIONS (Cont)

1. Turn off the circuit breaker or remove fuses to the oven branch circuit.
2. With the oven supported on a table or platform in front of the cabinet opening, connect the flexible conduit to the electrical junction box as shown below. Position the conduit in such a manner that it will lie in a natural loop, in the conduit pocket behind the unit, when the oven is installed. You will need to purchase an appropriate strain relief clamp to complete the connection of the conduit to the junction box.



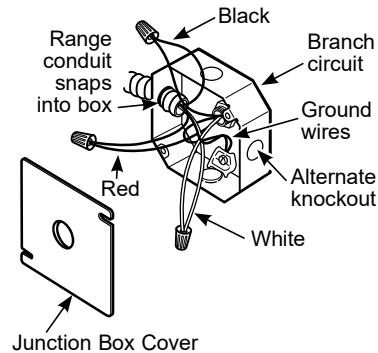
A NEW CONSTRUCTION AND FOUR-CONDUCTOR BRANCH CIRCUIT CONNECTION

- When installing in new construction, or
- When installing in a mobile home, or
- When installing in a recreational vehicle, or
- When local codes do not permit grounding through neutral:

NOTE: If residence leads or ground are aluminum conductors, see WARNING on page 5.

When connecting to a four-conductor branch circuit, if local codes permit:

1. Free the neutral (white) lead from being restrained to any other wires. If necessary, cut the neutral (white) lead and then re-strip it to expose the proper length of conductor.
2. Attach the appliance grounding lead (green or bare copper) in accordance with local codes.



3. Connect the oven neutral (white) lead to the branch circuit neutral (white or gray) in accordance with local codes, using a wire nut.
4. Connect the oven red lead to the branch circuit red lead and the oven black lead to the branch circuit black lead in accordance with local codes, using wire nuts.
5. Install proper strain relief clamp.
6. Install junction box cover.

Installation

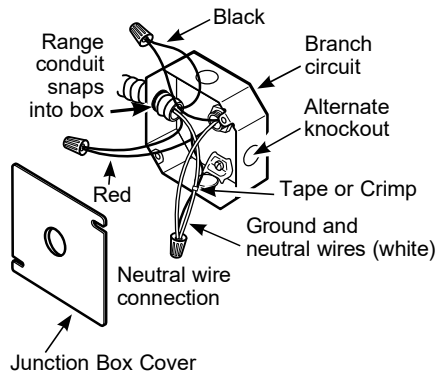
2 ELECTRICAL CONNECTIONS (Cont)

B THREE-CONDUCTOR BRANCH CIRCUIT CONNECTION

NOTE: If residence leads are aluminum conductors, see WARNING on page 5.

When connecting to a three-conductor branch circuit, if local codes permit:

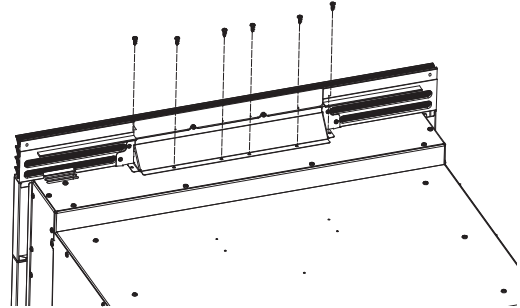
1. Connect the oven ground conductor along with the neutral (white) lead to the branch circuit neutral (white or gray in color), using a wire nut.



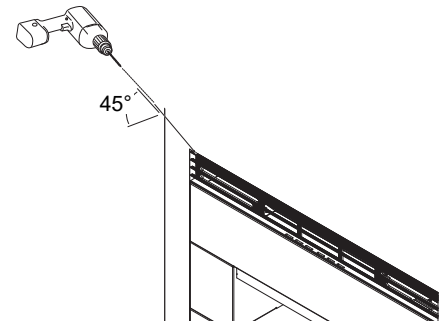
2. Connect the oven red lead to the branch circuit red lead and the oven black lead to the branch circuit black lead in accordance with local codes, using wire nuts.
3. Install proper strain relief clamp.
4. Install junction box cover.

3 INSTALLING THE OVEN IN THE CABINET

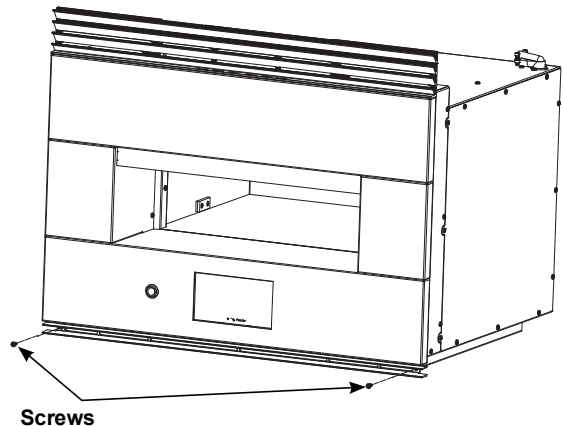
1. Before lifting oven into cabinet cutout, remove six screws from top vent and attach top grille to top of oven using the same screws as shown.



2. Lift oven into cabinet cutout using the bottom as a grip. Do not lift by the oven opening.
3. Carefully slide the oven back into the cutout until the top grille just touches the front face of the cabinet. **NOTE:** Do not push too far or damage to the top grille may occur.
4. Pre-drill top grille mounting holes into cabinet using 3/32" drill bit and the hole in the trim as a guide. Install two 3/4" Philips screws.



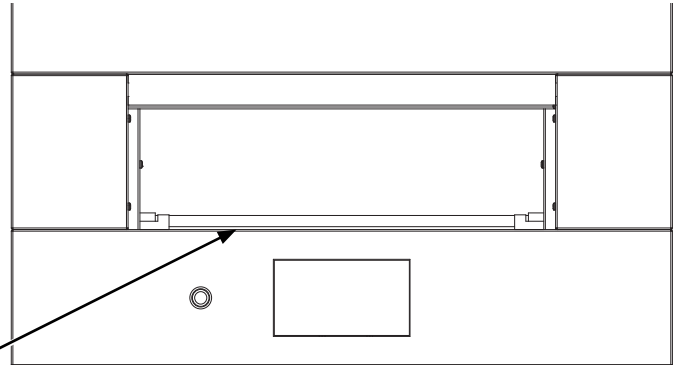
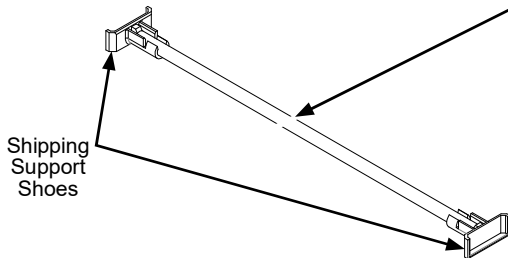
5. After oven is installed in cabinet, align Lower Vent Trim with holes on mounting brackets and install using two 1/2" Torx screws.



Installation

PRE-TEST CHECKLIST

- Remove all protective film, if present.
- Check to be sure that all wiring is secure and not pinched.
- Remove cooking deck shipping supports by:
 1. Remove Shipping Support Dowel by pulling up on one end.
 2. Remove both Shipping Support Shoes, Slide out from wall towards center of Stone.
 3. Pull out from oven and discard.



OPERATION CHECKLIST

IMPORTANT

- Remove all items from the inside of the oven.
- Check that conduit is securely connected to the junction box.
- Turn on the power to the oven. (Refer to your Owner's Manual.) Verify that all cooking functions operate properly.
- Check that the circuit breaker is not tripped nor the house fuse blown.
- See your Owner's Manual for troubleshooting list.

NOTE TO ELECTRICIAN: The power leads supplied with this appliance are UL recognized for connections to larger gauge household wiring. The insulation of these leads is rated at temperatures much higher than the temperature rating of household wiring. The current carrying capacity of a conductor is governed by the wire gauge and also the temperature rating of the insulation around the wire.

NOTE: ALUMINUM WIRING

- A. ⚠ WARNING IMPROPER CONNECTION OF ALUMINUM HOUSE WIRING TO THE COPPER LEADS CAN RESULT IN AN ELECTRICAL HAZARD OR FIRE.**
- B. Splice copper wires to aluminum wiring using special connectors designed and UL approved for joining copper to aluminum, and follow the manufacturer's recommended connector procedure closely.**

NOTE: Wire used, location and enclosure of splices, etc., must conform to good wiring practice and local codes.

NOTE: While performing installations described in this book, safety glasses or goggles should be worn.

NOTE: Product improvement is a continuing endeavor at GE Appliances. Therefore, materials, appearance and specifications are subject to change without notice.